

For Research Use Only

# Anti-Human NCR3/NKp30 Rabbit Recombinant Antibody, PBS Only

Catalog Number: 98365-2-PBS



## Basic Information

Catalog Number:

98365-2-PBS

Size:

1mg, 2 mg/ml

Source:

Rabbit

Isotype:

IgG

Immunogen Catalog Number:

EG31663

GenBank Accession Number:

BC052582

GeneID (NCBI):

259197

UNIPROT ID:

O14931

Full Name:

natural cytotoxicity triggering receptor 3

Calculated MW:

201 aa, 22 kDa

Purification Method:

Protein A purification

CloneNo.:

243109B11

## Applications

Tested Applications:

FC

Species Specificity:

human

## Background Information

NKp30 (CD337) (NCR3) is a 30-kDa type I transmembrane protein characterized by a single V-type immunoglobulin (Ig) extracellular domain. NKp30 expression is mostly restricted to NK cells although recent studies found this NCR to be present on the surface of additional immune cells, including  $\gamma\delta$  T cells and Innate Lymphoid Cells (ILCs). NKp30 is involved in NK cell-mediated killing of various tumor cell lines, virus-infected cells and also of autologous dendritic cells (DCs) during the so-called "editing" process.

## Storage

Storage:

Store at -80°C.

Storage Buffer:

PBS only, pH7.3

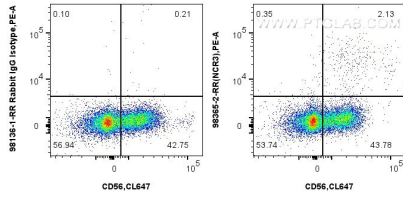
For technical support and original validation data for this product please contact:

T: 1 (888) 4PTGLAB (1-888-478-4522) (toll free in USA), or 1(312) 455-8498 (outside USA)

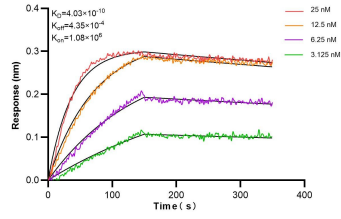
E: [proteintech@ptglab.com](mailto:proteintech@ptglab.com)  
W: [ptglab.com](http://ptglab.com)

This product is exclusively available under Proteintech Group brand and is not available to purchase from any other manufacturer.

## Selected Validation Data



$1 \times 10^6$  human peripheral blood leukocytes were surface stained with 0.25  $\mu$ g Anti-Human NCR3/NKp30 Rabbit RecAb (98365-2-RR, Clone: 243109B11) or 0.25  $\mu$ g Rabbit IgG Isotype Control RecAb (98136-1-RR, Clone: 240953C9), and PE-Conjugated Goat Anti-Rabbit IgG(H+L). Cells were then stained with CoraLite® Plus 647 Anti-Human NCAM1/CD56. Cells were not fixed. This data was developed using the same antibody clone with 98365-2-PBS in a



Biolayer interferometry (BLI) kinetic assays of 98365-2-RR against Human NCR3/NKp30 were performed. The affinity constant is 0.403 nM.