

For Research Use Only

Anti-Human NCR3/NKp30 Rabbit Recombinant Antibody

Catalog Number: 98365-2-RR



Basic Information

Catalog Number:

98365-2-RR

Size:

100ug, 1000 µg/ml

Source:

Rabbit

Isotype:

IgG

Immunogen Catalog Number:

EG31663

GenBank Accession Number:

BC052582

GeneID (NCBI):

259197

UNIPROT ID:

O14931

Full Name:

natural cytotoxicity triggering receptor 3

Calculated MW:

201 aa, 22 kDa

Purification Method:

Protein A purification

CloneNo.:

243109B11

Recommended Dilutions:

FC: 0.25 µg per 10⁶ cells in a 100 µl suspension

Applications

Tested Applications:

FC

Species Specificity:

human

Positive Controls:

FC : human peripheral blood leukocytes,

Background Information

NKp30 (CD337) (NCR3) is a 30-kDa type I transmembrane protein characterized by a single V-type immunoglobulin (Ig) extracellular domain. NKp30 expression is mostly restricted to NK cells although recent studies found this NCR to be present on the surface of additional immune cells, including $\gamma\delta$ T cells and Innate Lymphoid Cells (ILCs). NKp30 is involved in NK cell-mediated killing of various tumor cell lines, virus-infected cells and also of autologous dendritic cells (DCs) during the so-called "editing" process.

Storage

Storage:

Store at 2 - 8°C. Stable for one year after shipment.

Storage Buffer:

PBS with 0.09% sodium azide, pH7.3

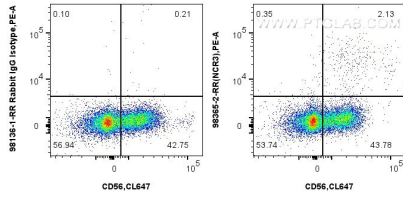
For technical support and original validation data for this product please contact:

T: 1 (888) 4PTGLAB (1-888-478-4522) (toll free in USA), or 1(312) 455-8498 (outside USA)

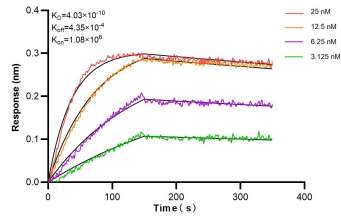
E: proteintech@ptglab.com
W: ptglab.com

This product is exclusively available under Proteintech Group brand and is not available to purchase from any other manufacturer.

Selected Validation Data



1x10⁶ human peripheral blood leukocytes were surface stained with 0.25 ug Anti-Human NCR3/NKp30 Rabbit RecAb (98365-2-RR, Clone: 243109B11) or 0.25 ug Rabbit IgG Isotype Control RecAb (98136-1-RR, Clone: 240953C9), and PE-Conjugated Goat Anti-Rabbit IgG(H+L). Cells were then stained with CoraLite® Plus 647 Anti-Human NCAM1/CD56. Cells were not fixed.



Biolayer interferometry (BLI) kinetic assays of 98365-2-RR against Human NCR3/NKp30 were performed. The affinity constant is 0.403 nM.