

For Research Use Only

Anti-Human Glycophorin A/CD235a Rabbit Recombinant Antibody, PBS Only

Catalog Number: 98370-2-PBS



Basic Information

Catalog Number:

98370-2-PBS

Size:

1mg, 2 mg/ml

Source:

Rabbit

Isotype:

IgG

GenBank Accession Number:

BC005319

GeneID (NCBI):

2993

UNIPROT ID:

P02724

Full Name:

glycophorin A (MNS blood group)

Calculated MW:

150 aa, 16 kDa

Purification Method:

Protein A purification

CloneNo.:

242822E1

Applications

Tested Applications:

FC

Species Specificity:

human

Background Information

Glycophorin A (GYPA) is the major transmembrane sialoglycoprotein in erythrocytes. It is a dimeric type I transmembrane protein carrying 15 closely clustered O-linked tetrasaccharides capped with sialic acid/N-acetylneuraminic acid (Neu5Ac). This 36 kDa protein represents the major sialoglycoprotein of the red blood cell membrane displaying about one million copies per cell. (PMID: 9490702)

Storage

Storage:

Store at -80°C.

Storage Buffer:

PBS Only

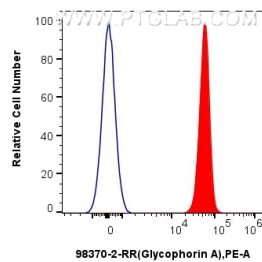
For technical support and original validation data for this product please contact:

T: 1 (888) 4PTGLAB (1-888-478-4522) (toll free
in USA), or 1(312) 455-8498 (outside USA)

E: proteintech@ptglab.com
W: ptglab.com

This product is exclusively available under Proteintech Group brand and is not available to purchase from any other manufacturer.

Selected Validation Data



1x10⁶ Human peripheral blood erythrocytes were surface stained with 0.25 ug Anti-Human Glycophorin A/CD235a Rabbit RecAb (98370-2-RR, Clone:242822E1) (red) or Rabbit IgG Isotype Control RecAb (98136-1-RR, Clone: 240953C9) (blue), and PE-Conjugated Goat Anti-Rabbit IgG(H+L). Cells were not fixed. This data was developed using the same antibody clone with 98370-2-PBS in a different storage buffer formulation.