

For Research Use Only

Anti-Human KIR2DL3/CD158b2 Rabbit Recombinant Antibody, PBS Only

Catalog Number: 98373-3-PBS



Basic Information

Catalog Number:

98373-3-PBS

Size:

1mg, 2 mg/ml

Source:

Rabbit

Isotype:

IgG

GenBank Accession Number:

NM_015868.2

GeneID (NCBI):

3804

UNIPROT ID:

P43628-1

Full Name:

killer cell immunoglobulin-like receptor, two domains, long cytoplasmic tail, 3

Calculated MW:

38 kDa

Purification Method:

Protein A purification

CloneNo.:

242282E11

Applications

Tested Applications:

FC

Species Specificity:

human

Background Information

Killer cell immunoglobulin-like receptors (KIRs) are a diverse family of inhibitory and activating receptors expressed on NK cells and a subset of T cells (PMID: 11861603). These polymorphic receptors interact with specific motifs on HLA class I molecules, modulate NK cytolytic activity and are encoded by genes located on chromosome 19q13.4 (PMID: 17069649). KIR2DL3, also known as CD158B2 or NKAT2, is an inhibitory receptor that is specific for HLA-C alleles (HLA-Cw1, HLA-Cw3 and HLA-Cw7) (PMID: 10196125). It is a 341-amino acid transmembrane glycoprotein consisting of an extracellular region containing two C2-type Ig-like domains, a 19-amino acid hydrophobic transmembrane region, and a long cytoplasmic tail with two immunoreceptor tyrosine-based inhibitory motifs (ITIMs). KIR2DL3 inhibits the cytolytic activity of NK cells thus preventing cell lysis (PMID: 7724594).

Storage

Storage:

Store at -80°C.

Storage Buffer:

PBS Only

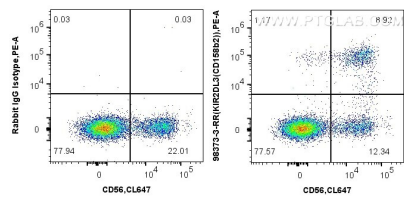
For technical support and original validation data for this product please contact:

T: 1 (888) 4PTGLAB (1-888-478-4522) (toll free in USA), or 1(312) 455-8498 (outside USA)

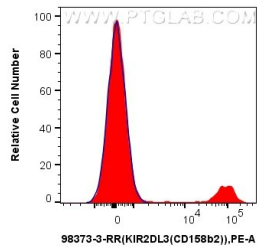
E: proteintech@ptglab.com
W: ptglab.com

This product is exclusively available under Proteintech Group brand and is not available to purchase from any other manufacturer.

Selected Validation Data



1x10⁶ human PBMCs were surface stained with 0.25 ug Anti-Human KIR2DL3/CD158b2 Rabbit RecAb (98373-3-RR, Clone: 242282E11) or Rabbit IgG Isotype Control RecAb (98136-1-RR, Clone: 240953C9) and PE-Conjugated Goat Anti-Rabbit IgG(H+L). Cells were then stained with CoraLite® Plus 647 Anti-Human NCAM1/CD56. Cells were not fixed. Lymphocytes were gated. This data was developed using the same antibody clone with 98373-3-PBS in a different storage



1x10⁶ human PBMCs were surface stained with 0.25 ug Anti-Human KIR2DL3/CD158b2 Rabbit RecAb (98373-3-RR, Clone: 242282E11) or Rabbit IgG Isotype Control RecAb (98136-1-RR, Clone: 240953C9) and PE-Conjugated Goat Anti-Rabbit IgG(H+L). Cells were not fixed. Lymphocytes were gated. This data was developed using the same antibody clone with 98373-3-PBS in a different storage buffer formulation.