

For Research Use Only

Anti-Human CD96 Rabbit Recombinant Antibody, PBS Only

Catalog Number: 98386-3-PBS



Basic Information

Catalog Number:

98386-3-PBS

Size:

1mg, 2 mg/ml

Source:

Rabbit

Isotype:

IgG

GenBank Accession Number:

NM_198196

GeneID (NCBI):

10225

UNIPROT ID:

P40200

Full Name:

CD96 molecule

Calculated MW:

402 aa, 46 kDa

Purification Method:

Protein A purification

CloneNo.:

242964G12

Applications

Tested Applications:

FC

Species Specificity:

human

Background Information

CD96 is a member of the poliovirus receptor (PVR, CD155)-nectin family that includes T cell Ig and ITIM domain (TIGIT) and CD226. CD96 expression is broadly similar between mice and humans, and is present on a proportion of hematopoietic stem cells, $\alpha\beta$ and $\gamma\delta$ T-cells, NK cells and a sub-population of B-cells in humans and present on $\alpha\beta$ and $\gamma\delta$ T-cells, NK cells and NKT cells in mice (PMID: 32043568, 29531070)

Storage

Storage:

Store at -80°C.

Storage Buffer:

PBS only

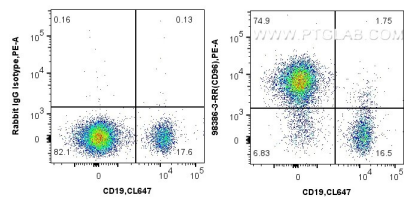
For technical support and original validation data for this product please contact:

T: 1 (888) 4PTGLAB (1-888-478-4522) (toll free in USA), or 1(312) 455-8498 (outside USA)

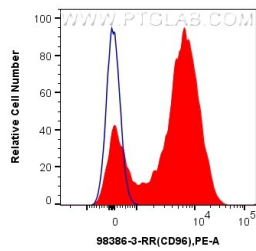
E: proteintech@ptglab.com
W: ptglab.com

This product is exclusively available under Proteintech Group brand and is not available to purchase from any other manufacturer.

Selected Validation Data



1x10⁶ human PBMCs were surface stained with 0.25 ug Anti-Human CD96 Rabbit RecAb (98386-3-RR, Clone:242964G12) , or Rabbit IgG Isotype Control RecAb (98136-1-RR, Clone: 240953C9) and PE-Conjugated Goat Anti-Rabbit IgG(H+L). Cells were then stained with CoraLite® Plus 647 Anti-Human CD19. Cells were not fixed. Lymphocyte were gated. This data was developed using the same antibody clone with 98386-3-PBS in a different storage buffer formulation.



1x10⁶ human PBMCs were surface stained with 0.25 ug Anti-Human CD96 Rabbit RecAb (98386-3-RR, Clone:242964G12)(red), or Rabbit IgG Isotype Control RecAb (98136-1-RR, Clone: 240953C9) (blue) and PE-Conjugated Goat Anti-Rabbit IgG(H+L). Cells were not fixed. Lymphocyte were gated. This data was developed using the same antibody clone with 98386-3-PBS in a different storage buffer formulation.