

For Research Use Only

# Anti-Human CD16 Rabbit Recombinant Antibody, PBS Only

Catalog Number: 98387-1-PBS



## Basic Information

### Catalog Number:

98387-1-PBS

### Size:

1mg, 2 mg/ml

### Source:

Rabbit

### Isotype:

IgG

### GenBank Accession Number:

BC017865

### GeneID (NCBI):

2214

### ENSEMBL Gene ID:

ENSG00000203747

### UNIPROT ID:

P08637

### Full Name:

Fc fragment of IgG, low affinity IIIa, receptor (CD16a)

### Calculated MW:

254 aa, 29 kDa

### Purification Method:

Protein A purification

### CloneNo.:

242426C2

## Applications

### Tested Applications:

FC

### Species Specificity:

human

## Background Information

CD16 is a 50-70-kDa low affinity Fc receptor found on the surface of natural killer cells, neutrophil polymorphonuclear leukocytes, monocytes and macrophages. CD16 mediates antibody-dependent cellular cytotoxicity (ADCC) and other antibody-dependent responses, such as phagocytosis. CD16 has been identified as Fc receptors FcγRIIIa (CD16a) and FcγRIIIb (CD16b), encoded by two nearly identical genes, FCGR3A and the FCGR3B.

## Storage

### Storage:

Store at -80°C.

### Storage Buffer:

PBS only

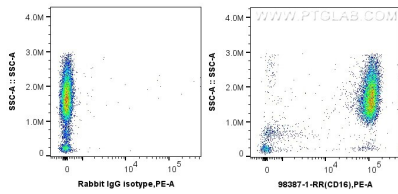
For technical support and original validation data for this product please contact:

T: 1 (888) 4PTGLAB (1-888-478-4522) (toll free in USA), or 1(312) 455-8498 (outside USA)

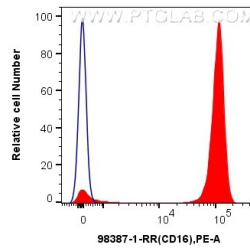
E: [proteintech@ptglab.com](mailto:proteintech@ptglab.com)  
W: [ptglab.com](http://ptglab.com)

This product is exclusively available under Proteintech Group brand and is not available to purchase from any other manufacturer.

## Selected Validation Data



1x10<sup>6</sup> human peripheral blood leukocyte were surface stained with 0.25 ug Anti-Human CD16 Rabbit RecAb (98387-1-RR, Clone:242426C2) .or Rabbit IgG Isotype Control RecAb (98136-1-RR, Clone: 240953C9)and PE-conjugated Goat Anti-Rabbit IgG. Cells were not fixed. This data was developed using the same antibody clone with 98387-1-PBS in a different storage buffer formulation.



1x10<sup>6</sup> human peripheral blood leukocyte were surface stained with 0.25 ug Anti-Human CD16 Rabbit RecAb (98387-1-RR, Clone:242426C2)(red).or Rabbit IgG Isotype Control RecAb (98136-1-RR, Clone: 240953C9) (blue) and PE-conjugated Goat Anti-Rabbit IgG.Cells were not fixed. This data was developed using the same antibody clone with 98387-1-PBS in a different storage buffer formulation.