

For Research Use Only

Anti-Human JAM2/CD322 Rabbit Recombinant Antibody, PBS Only

Catalog Number: 98390-1-PBS



Basic Information

Catalog Number:

98390-1-PBS

Size:

1mg, 2 mg/ml

Source:

Rabbit

Isotype:

IgG

Immunogen Catalog Number:

EG2914

GenBank Accession Number:

NM_021219.3

GeneID (NCBI):

58494

UNIPROT ID:

P57087-1

Full Name:

junctional adhesion molecule 2

Calculated MW:

33 kDa

Purification Method:

Protein A purification

CloneNo.:

242617F10

Applications

Tested Applications:

FC

Species Specificity:

human

Background Information

Junctional adhesion molecules (JAMs) are integral membrane proteins belonging to the immunoglobulin (Ig) superfamily. JAMs are expressed by leukocytes, platelets, endothelial, and epithelial cells and localized at the tight junction of polarized cells and on the cell surface of leukocytes. JAM-2, also known as CD322, VE-JAM or JAM-B, is specifically expressed in lymphatic endothelial cells and endothelial venules. JAM2 regulates cell-cell adhesion and signaling by interacting with other tight junction proteins such as PAR-3 and ZO-1.

Storage

Storage:

Store at -80°C.

Storage Buffer:

PBS only, pH7.3

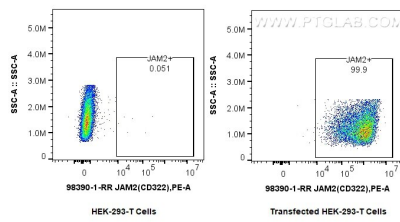
For technical support and original validation data for this product please contact:

T: 1 (888) 4PTGLAB (1-888-478-4522) (toll free in USA), or 1(312) 455-8498 (outside USA)

E: proteintech@ptglab.com
W: ptglab.com

This product is exclusively available under Proteintech Group brand and is not available to purchase from any other manufacturer.

Selected Validation Data



1x10⁶ HEK-293T cells or JAM2/CD322 transfected HEK-293T cells were surface stained with 0.25 ug Anti-Human JAM2 Rabbit RecAb (98390-1-RR, Clone: 242617F10) and PE-Conjugated Goat Anti-Rabbit IgG(H+L). Cells were not fixed. This data was developed using the same antibody clone with 98390-1-PBS in a different storage buffer formulation.