

For Research Use Only

# Anti-Mouse CLEC9A/CD370 Rabbit Recombinant Antibody

Catalog Number: 98395-1-RR



## Basic Information

**Catalog Number:**

98395-1-RR

**Size:**

100ug, 1000 µg/ml

**Source:**

Rabbit

**Isotype:**

IgG

**Immunogen Catalog Number:**

EG2730

**GenBank Accession Number:**

NM\_001205363.1

**GeneID (NCBI):**

232414

**UNIPROT ID:**

Q8BRU4-4

**Full Name:**

C-type lectin domain family 9, member a

**Calculated MW:**

30 kDa

**Purification Method:**

Protein A purification

**CloneNo.:**

242895F4

**Recommended Dilutions:**

FC: 0.25 µg per 10<sup>6</sup> cells in 100 µl suspension

## Applications

**Tested Applications:**

FC

**Species Specificity:**

mouse

**Positive Controls:**

FC : mouse splenocytes,

## Background Information

CLEC9A (C-type lectin domain family 9 member A), also known as DNGR1, CD370, is a type II membrane protein that contains C-type lectin domain. The C-type lectin domain family members share a common protein fold and have diverse functions, such as cell adhesion, cell-cell signaling, glycoprotein turnover, and roles in inflammation and immune response. Mouse Clec9A is primarily restricted to dendritic cells (DCs) and selectively expressed in mouse CD8<sup>+</sup> conventional DCs (cDCs) and plasmacytoid DCs (pDCs), whereas human CLEC9A is also expressed on human DC subtypes. CLEC9A functions as an activating receptor that recruits Syk kinase and can induce the production of proinflammatory cytokines. (PMID: 25553393; PMID: 15476922; PMID: 18669894; PMID: 18408006)

## Storage

**Storage:**

Store at 2 - 8°C. Stable for one year after shipment.

**Storage Buffer:**

PBS with 0.09% sodium azide, pH7.3

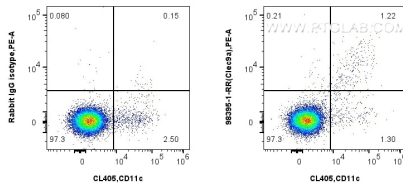
For technical support and original validation data for this product please contact:

T: 1 (888) 4PTGLAB (1-888-478-4522) (toll free in USA), or 1(312) 455-8498 (outside USA)

E: [proteintech@ptglab.com](mailto:proteintech@ptglab.com)  
W: [ptglab.com](http://ptglab.com)

**This product is exclusively available under Proteintech Group brand and is not available to purchase from any other manufacturer.**

## Selected Validation Data



1x10<sup>6</sup> BALB/c mouse splenocytes were surface stained with 0.25 ug Anti-Mouse CLEC9A Rabbit RecAb (98395-1-RR, Clone:242895F4) and PE-Conjugated Goat Anti-Rabbit IgG(H+L), or 0.25 ug Rabbit IgG Isotype Control RecAb (98136-1-RR, Clone: 240953C9). Cells were then stained with CoraLite® Plus 405 Anti-Mouse CD11c (N418) Mouse IgG2a Recombinant Antibody (CL405-65602, Clone: N418) and APC Anti-Mouse CD8a (5H10-1) (APC-65205, Clone:

