

For Research Use Only

# Anti-Human PDGFR beta/CD140b Rabbit Recombinant Antibody, PBS Only

Catalog Number: 98405-2-PBS



## Basic Information

Catalog Number:

98405-2-PBS

Size:

1mg, 2 mg/ml

Source:

Rabbit

Isotype:

IgG

Immunogen Catalog Number:

EG3715

GenBank Accession Number:

BC032224

GeneID (NCBI):

5159

UNIPROT ID:

P09619

Full Name:

platelet-derived growth factor  
receptor, beta polypeptide

Calculated MW:

1106 aa, 124 kDa

Purification Method:

Protein A purification

CloneNo.:

242711A9

## Applications

Tested Applications:

FC

Species Specificity:

human

## Background Information

PDGFRs are receptor tyrosine kinases with an extracellular ligand-binding domain and a cytoplasmic enzymatic domain. The signaling activity of PDGFRs is tightly regulated by an autoinhibitory allosteric conformation, and requires ligand-induced receptor dimerization at the cell surface to alleviate autoinhibition and achieve physiological activity (PMID: 21664579). PDGFR beta (platelet-derived growth factor receptor- $\beta$ )/CD140b is a constitutive marker expressed by ASCs in the angiogenic behavior of human retinal endothelial cells (HREs). CD140b (PDGFR $\beta$ ) plays a crucial role in controlling the intrinsic proliferation (PMID: 30976657)

## Storage

Storage:

Store at -80°C.

Storage Buffer:

PBS only, pH7.3

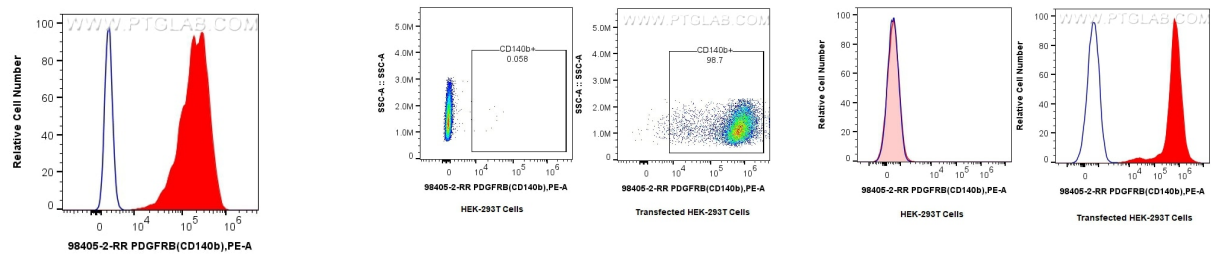
For technical support and original validation data for this product please contact:

T: 1 (888) 4PTGLAB (1-888-478-4522) (toll free  
in USA), or 1(312) 455-8498 (outside USA)

E: [proteintech@ptglab.com](mailto:proteintech@ptglab.com)  
W: [ptglab.com](http://ptglab.com)

This product is exclusively available under Proteintech Group brand and is not available to purchase from any other manufacturer.

Selected Validation Data



1x10<sup>6</sup> MG-63 cells were surface stained with 0.25 ug Anti-Human PDGFR beta/CD140b Rabbit RecAb (98405-2-RR, Clone: 242711A9) (red) or 0.25 ug Rabbit IgG Isotype Control RecAb (98136-1-RR, Clone: 240953C9) (blue), and PE-Conjugated Goat Anti-Rabbit IgG(H+L). Cells were not fixed. This data was developed using the same antibody clone with 98405-2-PBS in a different storage buffer formulation.

1x10<sup>6</sup> HEK-293T cells or PDGFR beta/CD140b transfected HEK-293T cells were surface stained with 0.25 ug Anti-Human PDGFR beta/CD140b Rabbit RecAb (98405-2-RR, Clone: 242711A9) and PE-Conjugated Goat Anti-Rabbit IgG(H+L). Cells were not fixed. This data was developed using the same antibody clone with 98405-2-PBS in a different storage buffer formulation.

1x10<sup>6</sup> HEK-293T cells (left) or PDGFR beta/CD140b transfected HEK-293T cells(right) were surface stained with 0.25 ug Anti-Human PDGFRB Rabbit RecAb (98405-2-RR, Clone: 242711A9) (red) or 0.25 ug Rabbit IgG Isotype Control RecAb (98136-1-RR, Clone: 240953C9) (blue), and PE-Conjugated Goat Anti-Rabbit IgG(H+L). Cells were not fixed. This data was developed using the same antibody clone with 98405-2-PBS in a different storage buffer formulation.