

For Research Use Only

# Anti-Mouse IL-15RA Rabbit Recombinant Antibody, PBS Only (Capture)

Catalog Number: 98406-2-PBS



## Basic Information

Catalog Number: 98406-2-PBS	GenBank Accession Number: NM_008358.2	Purification Method: Protein A purification
Size: 1mg, 2 mg/ml	GeneID (NCBI): 16169	CloneNo.: 242618B9
Source: Rabbit	UNIPROT ID: Q60819-1	
Isotype: IgG	Full Name: interleukin 15 receptor, alpha chain	
Immunogen Catalog Number: EG2687	Calculated MW: 28 kDa	

## Applications

**Tested Applications:**  
FC, Cytometric bead array, Indirect ELISA

**Species Specificity:**  
mouse

## Product Information

98406-2-PBS targets IL-15RA as part of a matched antibody pair:

MP02016-1: 98406-2-PBS capture and 85671-2-PBS detection (validated in Cytometric bead array)

MP02016-2: 98406-2-PBS capture and 85671-1-PBS detection (validated in Cytometric bead array)

Unconjugated rabbit recombinant monoclonal antibody in PBS only (BSA and azide free) storage buffer at a concentration of 1 mg/mL, ready for conjugation. Created using Proteintech's proprietary in-house recombinant technology. Recombinant production enables unrivalled batch-to-batch consistency, easy scale-up, and future security of supply.

This conjugation ready format makes antibodies ideal for use in many applications including: ELISAs, multiplex assays requiring matched pairs, mass cytometry, and multiplex imaging applications. Antibody use should be optimized by the end user for each application and assay.

## Background Information

Interleukin-15 (IL-15) is a pleiotropic cytokine that plays an important role in both innate and adaptive immunity. IL-15 is mainly produced by activated monocytes, macrophages and dendritic cells, and is structurally similar to IL-2 (PMID: 8178155; 12401478). These two cytokines share the same IL-2/15R $\beta$  and common  $\gamma$ -chain receptor subunits. In addition, IL-2 and IL-15 have their own private  $\alpha$ -chain receptor subunit, IL-2R $\alpha$  and IL-15R $\alpha$ , respectively (PMID: 7641685). The IL-15R $\alpha$  chain is expressed by many cell types including monocytes, DCs, NK, T cells and fibroblasts. Several isoforms of IL-15R $\alpha$  exist and are generated either by alternative splicing or by proteolytic cleavage (PMID: 10480910; 15265897).

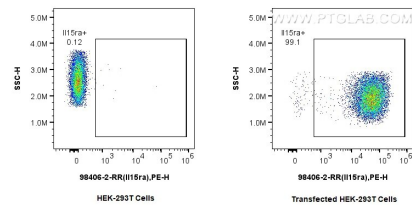
## Storage

**Storage:**  
Store at -80°C.  
**Storage Buffer:**  
PBS only, pH7.3

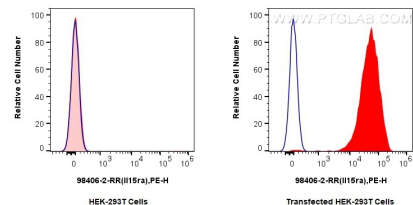
For technical support and original validation data for this product please contact:  
T: 1 (888) 4PTGLAB (1-888-478-4522) (toll free in USA), or 1(312) 455-8498 (outside USA)  
E: [proteintech@ptglab.com](mailto:proteintech@ptglab.com)  
W: [ptglab.com](http://ptglab.com)

This product is exclusively available under Proteintech Group brand and is not available to purchase from any other manufacturer.

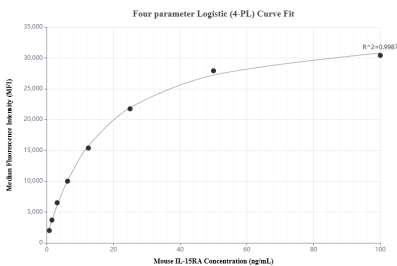
# Selected Validation Data



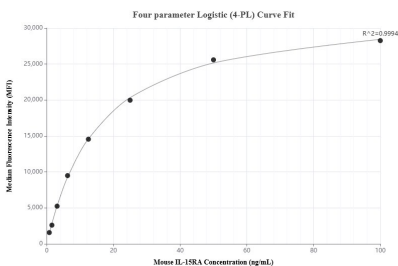
1x10<sup>6</sup> HEK-293T cells or IL-15RA transfected HEK-293T cells were surface stained with 0.25 ug Anti-Mouse IL-15RA Rabbit RecAb (98406-2-RR, Clone: 242618B9) and PE-Conjugated Goat Anti-Rabbit IgG(H+L). Cells were not fixed. This data was developed using the same antibody clone with 98406-2-PBS in a different storage buffer formulation.



1x10<sup>6</sup> HEK-293T cells or IL-15RA-transfected HEK-293T cells were surface stained with 0.25 ug Anti-Mouse IL-15RA Rabbit RecAb (98406-2-RR, Clone: 242618B9) and PE-Conjugated Goat Anti-Rabbit IgG(H+L) (red) or 0.25 ug Rabbit IgG Isotype Control RecAb (98136-1-RR, Clone: 240953C9) (blue). Cells were not fixed. This data was developed using the same antibody clone with 98406-2-PBS in a different storage buffer formulation.



Cytometric bead array standard curve of MP02016-1, MOUSE IL-15RA Recombinant Matched Antibody Pair, PBS Only. Capture antibody: 98406-2-PBS. Detection antibody: 85671-2-PBS. Standard: Eg2687. Range: 0.781-100 ng/mL



Cytometric bead array standard curve of MP02016-2, MOUSE IL-15RA Recombinant Matched Antibody Pair, PBS Only. Capture antibody: 98406-2-PBS. Detection antibody: 85671-1-PBS. Standard: Eg2687. Range: 0.781-100 ng/mL