

For Research Use Only

Anti-Human Prion protein PrP/CD230 Rabbit Recombinant Antibody, PBS Only

Catalog Number: 98414-4-PBS



Basic Information

Catalog Number:

98414-4-PBS

Size:

1mg, 2 mg/ml

Source:

Rabbit

Isotype:

IgG

Immunogen Catalog Number:

EG3359

GenBank Accession Number:

BC012844

GeneID (NCBI):

5621

UNIPROT ID:

P04156

Full Name:

prion protein

Purification Method:

Protein A purification

CloneNo.:

243104D11

Applications

Tested Applications:

FC

Species Specificity:

human

Background Information

The major prion protein (PrP), also known as CD230, is encoded by the prion protein-encoding gene (PRNP). PrP is widely expressed in a variety of tissues and is abundant in the nervous system and participates in neuronal growth and survival. PrP expression is strongly associated with immune infiltrating cells, immunosuppressive cell infiltration and immune checkpoint molecules. PrP is an immune-related prognostic marker that holds promise for predicting outcomes related to colorectal cancer immunotherapy.

Storage

Storage:

Store at -80°C.

Storage Buffer:

PBS only, pH7.3

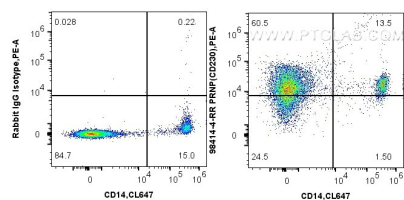
For technical support and original validation data for this product please contact:

T: 1 (888) 4PTGLAB (1-888-478-4522) (toll free
in USA), or 1(312) 455-8498 (outside USA)

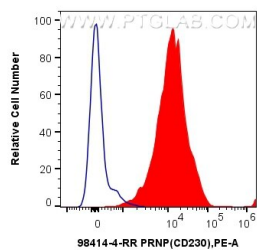
E: proteintech@ptglab.com
W: ptglab.com

This product is exclusively available under Proteintech Group brand and is not available to purchase from any other manufacturer.

Selected Validation Data



1x10⁶ human PBMCs were surface stained with 0.25 ug Anti-Human Prion protein PrP/CD230 Rabbit RecAb (98414-4-RR, Clone: 243104D11) or Rabbit IgG Isotype Control RecAb (98136-1-RR, Clone: 240953C9), and PE-Conjugated Goat Anti-Rabbit IgG(H+L). Cells were then stained with CoraLite® Plus 647 Anti-Human CD14. Cells were incubated with FC Receptor Block prior to staining. Cells were not fixed. This data was developed using the same antibody clone



1x10⁶ human PBMCs were surface stained with 0.25 ug Anti-Human Prion protein PrP/CD230 Rabbit RecAb (98414-4-RR, Clone: 243104D11) (red) or Rabbit IgG Isotype Control RecAb (98136-1-RR, Clone: 240953C9) (blue), and PE-Conjugated Goat Anti-Rabbit IgG(H+L). Cells were incubated with FC Receptor Block prior to staining. Cells were not fixed. This data was developed using the same antibody clone with 98414-4-PBS in a different storage