

For Research Use Only

Anti-Human CRLF2 Rabbit Recombinant Antibody, PBS Only

Catalog Number: 98415-1-PBS



Basic Information

Catalog Number: 98415-1-PBS	GenBank Accession Number: NM_022148.3	Purification Method: Protein A purification
Size: 1mg , 2 mg/ml	GeneID (NCBI): 64109	CloneNo.: 243090E1
Source: Rabbit	UNIPROT ID: Q9HC73	
Isotype: IgG	Full Name: cytokine receptor-like factor 2	
Immunogen Catalog Number: EG2626	Calculated MW: 42 kDa	

Applications

Tested Applications:
FC

Species Specificity:
human

Background Information

Cytokine receptor-like factor 2 (CRLF2), also known as the thymic stromal derived lymphopoietin receptor (TSLPR), which in combination with the interleukin 7 receptor alpha chain (IL-7R) forms the receptor for thymic stromal lymphopoietin. CRLF2 is a type I cytokine receptor. CRLF2 rearrangements occur either as a translocation to the immunoglobulin heavy-chain enhancer region (IGH-CRLF2) or by a deletion of upstream PAR1 that leads to joining of CRLF2 to adjacent P2RY8. CRLF2 is expressed in heart, skeletal muscle, kidney and adult and fetal liver and is primarily expressed in dendrites and monocytes. (PMID: 20807819; 31644323; 33485429)

Storage

Storage:
Store at -80°C.
Storage Buffer:
PBS only, pH7.3

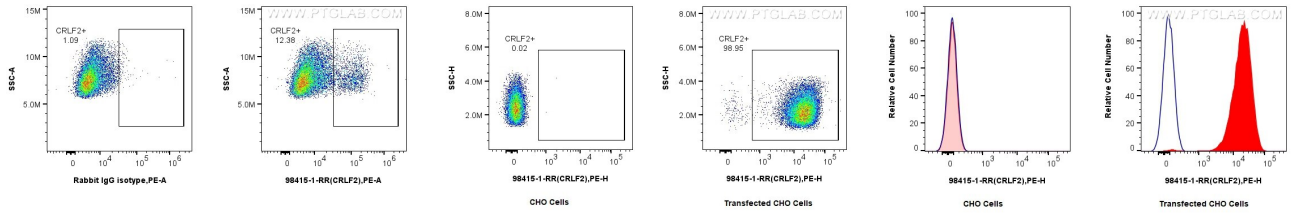
For technical support and original validation data for this product please contact:

T: 1 (888) 4PTGLAB (1-888-478-4522) (toll free in USA), or 1(312) 455-8498 (outside USA)

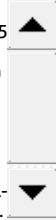
E: proteintech@ptglab.com
W: ptglab.com

This product is exclusively available under Proteintech Group brand and is not available to purchase from any other manufacturer.

Selected Validation Data



1x10⁶ human monocyte-derived mature dendritic cells were surface stained with 0.25 ug Anti-Human CRLF2 Rabbit RecAb (98415-1-RR, Clone: 243090E1) or 0.25 ug Rabbit IgG Isotype Control RecAb (98136-1-RR, Clone: 240953C9), and PE-Conjugated Goat Anti-Rabbit IgG(H+L). Cells were incubated with FC Receptor Block prior to staining. Cells were not fixed. This data was developed using the same antibody clone with 98415-1-PBS in a different storage buffer formulation.



1x10⁶ CHO cells or CRLF2-transfected CHO cells were surface stained with 0.25 ug Anti-Human CRLF2 Rabbit RecAb (98415-1-RR, Clone: 243090E1) and PE-Conjugated Goat Anti-Rabbit IgG(H+L). Cells were not fixed. This data was developed using the same antibody clone with 98415-1-PBS in a different storage buffer formulation.

1x10⁶ CHO cells or CRLF2-transfected CHO cells were surface stained with 0.25 ug Anti-Human CRLF2 Rabbit RecAb (98415-1-RR, Clone: 243090E1) (red) or 0.25 ug Rabbit IgG Isotype Control RecAb (98136-1-RR, Clone: 240953C9) (blue), and PE-Conjugated Goat Anti-Rabbit IgG(H+L). Cells were not fixed. This data was developed using the same antibody clone with 98415-1-PBS in a different storage buffer formulation.