

For Research Use Only

# Anti-Human Siglec-6/CD327 Rabbit Recombinant Antibody, PBS Only

Catalog Number: 98416-1-PBS



## Basic Information

Catalog Number:	98416-1-PBS	GenBank Accession Number:	BC035359	Purification Method:	Protein A purification
Size:	1mg , 2 mg/ml	GeneID (NCBI):	946	CloneNo.:	243088G2
Source:	Rabbit	UNIPROT ID:	O43699		
Isotype:	IgG	Full Name:	sialic acid binding Ig-like lectin 6		
Immunogen Catalog Number:	EG2070	Calculated MW:	426 aa, 47 kDa		

## Applications

Tested Applications:  
FC

Species Specificity:  
human

## Background Information

Siglec-6, also known as CD327, originally identified on trophoblast cells of the placenta, is highly and consistently expressed on MCs from both mucosal and non-mucosal sites. Siglec-6 consists of 3 extracellular immunoglobulin (Ig) domains and 2 intracellular immunoreceptor tyrosine-based inhibition motifs (ITIMs), closely resembling the molecular structure of Siglec-3 (CD33) (PMID: 34289026). Siglec-6 was recruited to placental expression during human evolution, presumably to interact with sialylated ligands for specific negative signaling functions and/or to regulate leptin availability (PMID: 17580316). Siglec-6 is an immunoreceptor tyrosine-based inhibitory motif (ITIM)-bearing receptor selectively expressed by mast cells, making it a promising target for therapeutic intervention (PMID: 35406705).

## Storage

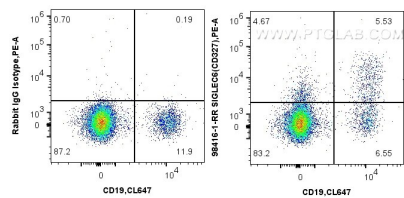
Storage:  
Store at -80°C.

Storage Buffer:  
PBS only, pH7.3

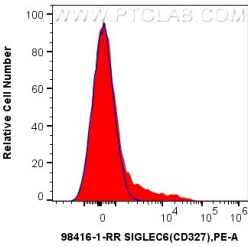
For technical support and original validation data for this product please contact:  
T: 1 (888) 4PTGLAB (1-888-478-4522) (toll free in USA), or 1(312) 455-8498 (outside USA)  
E: [proteintech@ptglab.com](mailto:proteintech@ptglab.com)  
W: [ptglab.com](http://ptglab.com)

This product is exclusively available under Proteintech Group brand and is not available to purchase from any other manufacturer.

Selected Validation Data



1x10<sup>6</sup> human PBMCs were surface stained with 0.25 ug Anti-Human Siglec-6/CD327 Rabbit RecAb (98416-1-RR, Clone: 243088G2) or Rabbit IgG Isotype Control RecAb (98136-1-RR, Clone: 240953C9), and PE-Conjugated Goat Anti-Rabbit IgG(H+L). Cells were co-stained with CoraLite® Plus 647 Anti-Human CD19. Cells were not fixed. Lymphocytes were gated. This data was developed using the same antibody clone with 98416-1-PBS in a different storage buffer formulation.



1x10<sup>6</sup> human PBMCs were surface stained with 0.25 ug Anti-Human Siglec-6/CD327 Rabbit RecAb (98416-1-RR, Clone: 243088G2) (red) or Rabbit IgG Isotype Control RecAb (98136-1-RR, Clone: 240953C9) (blue), and PE-Conjugated Goat Anti-Rabbit IgG(H+L). Cells were not fixed. Lymphocytes were gated. This data was developed using the same antibody clone with 98416-1-PBS in a different storage buffer formulation.