

For Research Use Only

# Rat IgG2a Isotype Control Recombinant Antibody

Catalog Number: 98427-1-TR



## Basic Information

Catalog Number:

98427-1-TR

Size:

100ug , 1000 µg/ml

Source:

Rat

Isotype:

IgG2a

GenBank Accession Number:

GeneID (NCBI):

Full Name:

Purification Method:

Protein A purification

CloneNo.:

250862A1

## Applications

Tested Applications:

FC

Species Specificity:

n/a

## Background Information

This product is an isotype control antibody, which is used to estimate the non-specific binding of target primary antibodies due to Fc receptor binding or other protein-protein interactions. An isotype control antibody should have the same immunoglobulin type and be used at the same concentration as the test antibody.

## Storage

Storage:

Store at 2 - 8°C. Stable for one year after shipment.

Storage Buffer:

PBS with 0.09% sodium azide, pH7.3

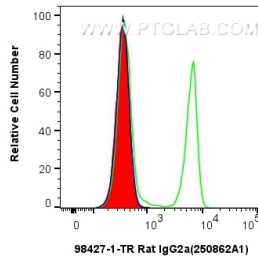
For technical support and original validation data for this product please contact:

T: 1 (888) 4PTGLAB (1-888-478-4522) (toll free in USA), or 1(312) 455-8498 (outside USA)

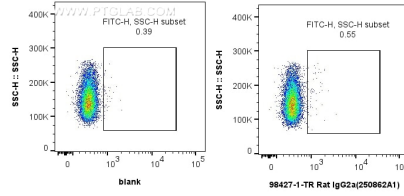
E: [proteintech@ptglab.com](mailto:proteintech@ptglab.com)  
W: [ptglab.com](http://ptglab.com)

This product is exclusively available under Proteintech Group brand and is not available to purchase from any other manufacturer.

## Selected Validation Data



$1 \times 10^6$  mouse splenocytes were surface stained with 0.25  $\mu$ g Rat IgG2a Isotype Control RecAb (98427-1-TR, Clone: 250862A1) and FITC anti-rat IgG2a at dilution 1:100 (red), or 0.25  $\mu$ g Anti-Mouse CD4 (65141-1-Ig, Clone: RM4-5) and FITC anti-rat IgG2a at dilution 1:100 (green), or unstained (blue). Cells were not fixed.



$1 \times 10^6$  mouse splenocytes were surface stained with 0.25  $\mu$ g Rat IgG2a Isotype Control RecAb (98427-1-TR, Clone: 250862A1) and FITC anti-rat IgG2a at dilution 1:100 (right), or unstained (left). Cells were not fixed.