

For Research Use Only

Anti-Mouse CD62L Rabbit Recombinant Antibody, PBS Only

Catalog Number: 98441-3-PBS



Basic Information

Catalog Number: 98441-3-PBS	GenBank Accession Number: NM_011346.2	Purification Method: Protein A purification
Size: 1mg, 2 mg/ml	GeneID (NCBI): 20343	CloneNo.: 250271C5
Source: Rabbit	UNIPROT ID: P18337	
Isotype: IgG	Full Name: selectin, lymphocyte	
Immunogen Catalog Number: EG3845	Calculated MW: 42 kDa	

Applications

Tested Applications:
FC

Species Specificity:
mouse

Background Information

CD62L, also known as L-selectin or SELL, is a member of the selectin family of adhesion molecules that also include CD62E (E-selectin) and CD62P (P-selectin) (PMID: 2663882, 2473156, 1382078). CD62L is a highly glycosylated protein of 95-105 kDa on neutrophils and 74 kDa on lymphocytes (PMID: 1382078; 1694883, 1695155). CD62L is expressed on the surface of most leukocytes, including lymphocytes, neutrophils, monocytes, eosinophils, hematopoietic progenitor cells, and immature thymocytes (PMID: 1694883, 1688580). It mediates the binding of lymphocytes to high endothelial venules (HEV) of peripheral lymph nodes through interactions with a constitutively expressed ligand, and is also involved in lymphocyte, neutrophil, and monocyte attachment to endothelium at sites of inflammation (PMID: 1382078).

Storage

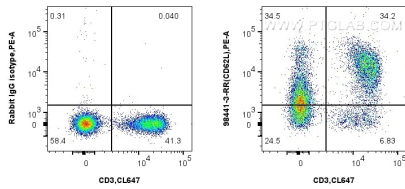
Storage:
Store at -80°C.

Storage Buffer:
PBS only, pH7.3

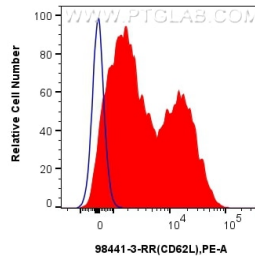
For technical support and original validation data for this product please contact:
T: 1 (888) 4PTGLAB (1-888-478-4522) (toll free in USA), or 1(312) 455-8498 (outside USA) E: proteintech@ptglab.com
W: ptglab.com

This product is exclusively available under Proteintech Group brand and is not available to purchase from any other manufacturer.

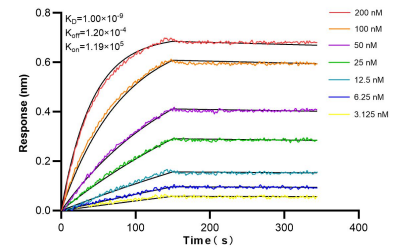
Selected Validation Data



1x10⁶ mouse splenocytes were surface stained with 0.25 ug Anti-Mouse CD62L Rabbit RecAb (98441-3-RR, Clone:250271C5) or 0.25 ug Rabbit IgG Isotype Control RecAb (98136-1-RR, Clone: 240953C9), and PE-Conjugated Goat Anti-Rabbit IgG(H+L). Cells were then stained with CoraLite® Plus 647 Anti-Mouse CD3 (17A2) (CL647-65077, Clone: 17A2). Cells were incubated with FC Receptor Block prior to staining. Cells were not fixed. This data was developed using the



1x10⁶ mouse splenocytes were surface stained with 0.25 ug Anti-Mouse CD62L Rabbit RecAb (98441-3-RR, Clone:250271C5) (red) or 0.25 ug Rabbit IgG Isotype Control RecAb (98136-1-RR, Clone: 240953C9) (blue), and PE-Conjugated Goat Anti-Rabbit IgG(H+L). Cells were incubated with FC Receptor Block prior to staining. Cells were not fixed. This data was developed using the same antibody clone with 98441-3-PBS in a different storage buffer formulation.



Bi-layer interferometry (BLI) kinetic assays of 98441-3-RR against Mouse CD62L were performed. The affinity constant is 1.00 nM.