

For Research Use Only

# Anti-Mouse CD37 Rabbit Recombinant Antibody, PBS Only

Catalog Number: 98443-1-PBS



## Basic Information

Catalog Number:

98443-1-PBS

Size:

1mg, 3 mg/ml

Source:

Rabbit

Isotype:

IgG

Immunogen Catalog Number:

EG2729

GenBank Accession Number:

NM\_007645.4

GeneID (NCBI):

12493

UNIPROT ID:

Q61470

Full Name:

CD37 antigen

Calculated MW:

32 kDa

Purification Method:

Protein A purification

CloneNo.:

250262E4

## Applications

Tested Applications:

FC

Species Specificity:

mouse

## Background Information

CD37 is a membrane protein of the tetraspanin superfamily which are characterized by the presence of four conserved transmembrane regions. Many of these members are expressed on leukocytes and have been implicated in signal transduction, cell-cell interactions, and cellular activation and development. CD37 plays a role in B-cell function, and may also play a role in T-cell-B-cell interactions (PMID: 10891477).

## Storage

Storage:

Store at -80°C.

Storage Buffer:

PBS only, pH7.3

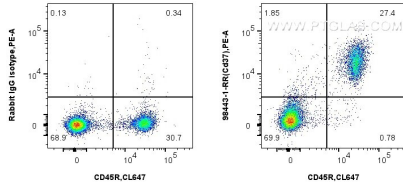
For technical support and original validation data for this product please contact:

T: 1 (888) 4PTGLAB (1-888-478-4522) (toll free in USA), or 1(312) 455-8498 (outside USA)

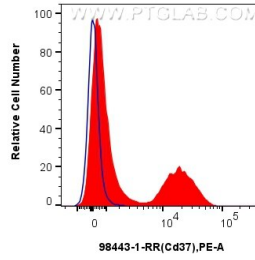
E: [proteintech@ptglab.com](mailto:proteintech@ptglab.com)  
W: [ptglab.com](http://ptglab.com)

This product is exclusively available under Proteintech Group brand and is not available to purchase from any other manufacturer.

## Selected Validation Data



1x10<sup>6</sup> mouse splenocytes were surface stained with 0.25 ug Anti-Mouse CD37 Rabbit RecAb (98443-1-RR, Clone: 250262E4) or 0.25 ug Rabbit IgG Isotype Control RecAb (98136-1-RR, Clone: 240953C9), and PE-Conjugated Goat Anti-Rabbit IgG(H+L). Cells were then stained with CoraLite® Plus 647 Anti-Mouse CD45R (B220) (RA3-6B2) (CL647-65139, Clone: RA3-6B2). Cells were not fixed. This data was developed using the same antibody clone with 98443-1-PBS in a



1x10<sup>6</sup> mouse splenocytes were surface stained with 0.25 ug Anti-Mouse CD37 Rabbit RecAb (98443-1-RR, Clone: 250262E4) (red) or 0.25 ug Rabbit IgG Isotype Control RecAb (98136-1-RR, Clone: 240953C9) (blue), and PE-Conjugated Goat Anti-Rabbit IgG(H+L). Cells were not fixed. This data was developed using the same antibody clone with 98443-1-PBS in a different storage buffer formulation.