

For Research Use Only

# Anti-Human CD206 Rabbit Recombinant Antibody, PBS Only

Catalog Number: 98458-3-PBS



## Basic Information

<b>Catalog Number:</b> 98458-3-PBS	<b>GenBank Accession Number:</b> NM_002438.4	<b>Purification Method:</b> Protein A purification
<b>Size:</b> 1mg, 3 mg/ml	<b>GeneID (NCBI):</b> 4360	<b>CloneNo.:</b> 250381C1
<b>Source:</b> Rabbit	<b>UNIPROT ID:</b> P22897-1	
<b>Isotype:</b> IgG	<b>Full Name:</b> mannose receptor, C type 1	
<b>Immunogen Catalog Number:</b> EG2428	<b>Calculated MW:</b> 166 kDa	

## Applications

**Tested Applications:**  
FC

**Species Specificity:**  
human

## Background Information

CD206, also named as MMR, CLEC13D and MRC1, is a type I membrane receptor that mediates the endocytosis of glycoproteins by macrophages. CD206 has been shown to bind high-mannose structures on the surface of potentially pathogenic viruses, bacteria, and fungi so that they can be neutralized by phagocytic engulfment. CD206 is a 170 kDa transmembrane protein which contains 5 domains: an amino-terminal cysteine-rich region, a fibronectin type II repeat, a series of eight tandem lectin-like carbohydrate recognition domains (responsible for the recognition of mannose and fucose), a transmembrane domain, and an intracellular carboxy-terminal tail. It is expressed on most tissue macrophages, in vitro derived dendritic cells, lymphatic and sinusoidal endothelia.

## Storage

**Storage:**  
Store at -80°C.

**Storage Buffer:**  
PBS only, pH7.3

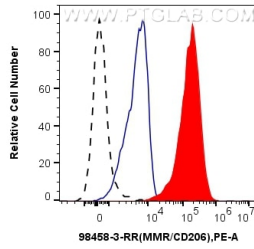
For technical support and original validation data for this product please contact:

T: 1 (888) 4PTGLAB (1-888-478-4522) (toll free in USA), or 1(312) 455-8498 (outside USA)

E: [proteintech@ptglab.com](mailto:proteintech@ptglab.com)  
W: [ptglab.com](http://ptglab.com)

**This product is exclusively available under Proteintech Group brand and is not available to purchase from any other manufacturer.**

## Selected Validation Data



1x10<sup>6</sup> GM-CSF, IL-4, and IL-10 treated human PBMCs were surface stained with 0.25 ug Anti-Human MMR/CD206 Rabbit RecAb (98458-3-RR, Clone: 250381C1) (red) or Rabbit IgG Isotype Control RecAb (98136-1-RR, Clone: 240953C9) (blue), and PE-Conjugated Goat Anti-Rabbit IgG(H+L). 1x10<sup>6</sup> untreated human PBMCs were surface stained with 0.25 ug Anti-Human MMR/CD206 Rabbit RecAb (98458-3-RR, Clone: 250381C1) (black, dashed) and PE-

