

For Research Use Only

Anti-Human CD206 Rabbit Recombinant Antibody

Catalog Number: 98458-3-RR **1 Publications**



Basic Information

Catalog Number:

98458-3-RR

Size:

100ug, 1000 µg/ml

Source:

Rabbit

Isotype:

IgG

Immunogen Catalog Number:

EG2428

GenBank Accession Number:

NM_002438.4

GeneID (NCBI):

4360

UNIPROT ID:

P22897-1

Full Name:

mannose receptor, C type 1

Calculated MW:

166 kDa

Purification Method:

Protein A purification

CloneNo.:

250381C1

Recommended Dilutions:

FC: 0.25 ug per 10⁶ cells in a 100 µl suspension

Applications

Tested Applications:

FC

Cited Applications:

FC

Species Specificity:

human

Cited Species:

human

Positive Controls:

FC : GM-CSF, IL-4, and IL-10 treated human PBMCs,

Background Information

CD206, also named as MMR, CLEC13D and MRC1, is a type I membrane receptor that mediates the endocytosis of glycoproteins by macrophages. CD206 has been shown to bind high-mannose structures on the surface of potentially pathogenic viruses, bacteria, and fungi so that they can be neutralized by phagocytic engulfment. CD206 is a 170 kDa transmembrane protein which contains 5 domains: an amino-terminal cysteine-rich region, a fibronectin type II repeat, a series of eight tandem lectin-like carbohydrate recognition domains (responsible for the recognition of mannose and fucose), a transmembrane domain, and an intracellular carboxy-terminal tail. It is expressed on most tissue macrophages, in vitro derived dendritic cells, lymphatic and sinusoidal endothelia.

Notable Publications

Author	Pubmed ID	Journal	Application
Jie Fang	41408455	Sci Rep	FC

Storage

Storage:

Store at 2 - 8°C. Stable for one year after shipment.

Storage Buffer:

PBS with 0.09% sodium azide, pH7.3

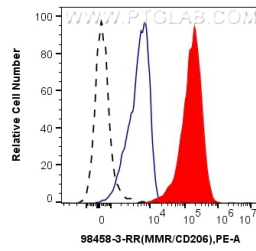
For technical support and original validation data for this product please contact:

T: 1 (888) 4PTGLAB (1-888-478-4522) (toll free in USA), or 1(312) 455-8498 (outside USA)

E: proteintech@ptglab.com
W: ptglab.com

This product is exclusively available under Proteintech Group brand and is not available to purchase from any other manufacturer.

Selected Validation Data



1x10⁶ GM-CSF, IL-4, and IL-10 treated human PBMCs were surface stained with 0.25 ug Anti-Human MMR/CD206 Rabbit RecAb (98458-3-RR, Clone: 250381C1) (red) or Rabbit IgG Isotype Control RecAb (98136-1-RR, Clone: 240953C9) (blue), and PE-Conjugated Goat Anti-Rabbit IgG(H+L). 1x10⁶ untreated human PBMCs were surface stained with 0.25 ug Anti-Human MMR/CD206 Rabbit RecAb (98458-3-RR, Clone: 250381C1) (black, dashed) and PE-

