

For Research Use Only

Anti-Mouse CD8b Rabbit Recombinant Antibody, PBS Only

Catalog Number: 98461-3-PBS



Basic Information

Catalog Number: 98461-3-PBS	GenBank Accession Number: NM_009858.2	Purification Method: Protein A purification
Size: 1mg, 3 mg/ml	GeneID (NCBI): 12526	CloneNo.: 250480F2
Source: Rabbit	UNIPROT ID: P10300	
Isotype: IgG	Full Name: CD8 antigen, beta chain 1	
Immunogen Catalog Number: EG4275	Calculated MW: 24 kDa	

Applications

Tested Applications:
FC

Species Specificity:
mouse

Background Information

CD8b (T-cell surface glycoprotein CD8 beta chain) is an integral membrane glycoprotein that forms disulfide-linked heterodimers with CD8a (CD8 alpha chain). The CD8 alpha/beta heterodimer is the predominant CD8 complex expressed on the cell surface (PMID: 1534146; 2111591). CD8 is a transmembrane glycoprotein predominantly expressed on the surface of cytotoxic T cells and can also be found on natural killer cells, cortical thymocytes, and dendritic cells. CD8 serves as a co-receptor for the T cell receptor (TCR). Both CD8 and TCR recognize antigens displayed by an antigen presenting cell (APC) in the context of class I MHC molecules. CD8 plays a role in T cell development and activation of mature T cells.

Storage

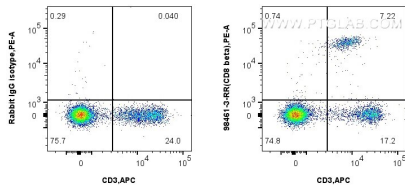
Storage:
Store at -80°C.

Storage Buffer:
PBS only, pH7.3

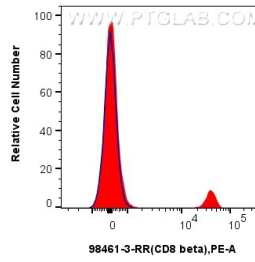
For technical support and original validation data for this product please contact:
T: 1 (888) 4PTGLAB (1-888-478-4522) (toll free in USA), or 1(312) 455-8498 (outside USA) E: proteintech@ptglab.com
W: ptglab.com

This product is exclusively available under Proteintech Group brand and is not available to purchase from any other manufacturer.

Selected Validation Data



1x10⁶ mouse splenocytes were surface stained with 0.25 ug Anti-Mouse CD8b Rabbit RecAb (98461-3-RR, Clone: 250480F2) or 0.25 ug Rabbit IgG Isotype Control RecAb (98136-1-RR, Clone: 240953C9), and PE-Conjugated Goat Anti-Rabbit IgG(H+L). Cells were then stained with APC Anti-Mouse CD3 (17A2) (APC-65077, Clone: 17A2). Cells were not fixed. This data was developed using the same antibody clone with 98461-3-PBS in a different storage buffer formulation.



1x10⁶ mouse splenocytes were surface stained with 0.25 ug Anti-Mouse CD8b Rabbit RecAb (98461-3-RR, Clone: 250480F2) (red) or 0.25 ug Rabbit IgG Isotype Control RecAb (98136-1-RR, Clone: 240953C9) (blue), and PE-Conjugated Goat Anti-Rabbit IgG(H+L). Cells were not fixed. This data was developed using the same antibody clone with 98461-3-PBS in a different storage buffer formulation.