

For Research Use Only

Anti-Human LILRA5/CD85f Rabbit Recombinant Antibody

Catalog Number: 98477-1-RR



Basic Information

Catalog Number:

98477-1-RR

Size:

100ug , 1000 µg/ml

Source:

Rabbit

Isotype:

IgG

Immunogen Catalog Number:

EG2737

GenBank Accession Number:

NM_021250.4

GeneID (NCBI):

353514

UNIPROT ID:

A6NI73-1

Full Name:

leukocyte immunoglobulin-like receptor, subfamily A (with TM domain), member 5

Calculated MW:

33 kDa

Purification Method:

Protein A purification

CloneNo.:

250298G11

Recommended Dilutions:

FC: 0.25 ug per 10⁶ cells in a 100 µl suspension

Applications

Tested Applications:

FC

Species Specificity:

human

Positive Controls:

FC : human PBMCs,

Background Information

LILRA5, also named as CD85f, ILT11, LILRB7 or LIR9, is a member of the leukocyte immunoglobulin-like receptor (LIR) family, which is a group of immune inhibitory and stimulatory receptors (PMID: 15304001). There are two membrane-bound and two soluble forms of LILRA5. The transmembrane LILRA5 contains a short cytoplasmic domain and a charged arginine residue within the transmembrane region (PMID: 19009525). It is mostly expressed in myeloid cells, including monocytes and neutrophils (PMID: 12393390). LILRA5 may play a role in triggering innate immune responses. It does not function in class I MHC antigens recognition (PMID: 16675463).

Storage

Storage:

Store at 2 - 8°C. Stable for one year after shipment.

Storage Buffer:

PBS with 0.09% sodium azide, pH7.3

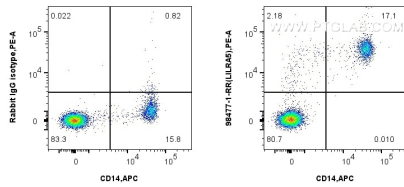
For technical support and original validation data for this product please contact:

T: 1 (888) 4PTGLAB (1-888-478-4522) (toll free in USA), or 1(312) 455-8498 (outside USA)

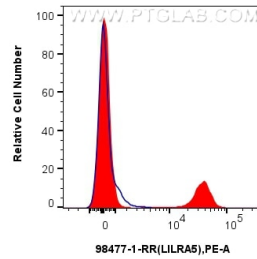
E: proteintech@ptglab.com
W: ptglab.com

This product is exclusively available under Proteintech Group brand and is not available to purchase from any other manufacturer.

Selected Validation Data



1x10⁶ human PBMCs were surface stained with 0.25 ug Anti-Human LILRA5/CD85f Rabbit RecAb (98477-1-RR, Clone:250298G11) or 0.25 ug Rabbit IgG Isotype Control RecAb (98136-1-RR, Clone: 240953C9), and PE-Conjugated Goat Anti-Rabbit IgG(H+L). Cells were then stained with APC Anti-Human CD14 Rabbit Recombinant Antibody (APC-98040, Clone: 230332D7). Cells were incubated with FC Receptor Block prior to fixing and staining. Cells were not fixed.



1x10⁶ human PBMCs were surface stained with 0.25 ug Anti-Human LILRA5/CD85f Rabbit RecAb (98477-1-RR, Clone: 250298G11) (red) or 0.25 ug Rabbit IgG Isotype Control RecAb (98136-1-RR, Clone: 240953C9) (blue), and PE-Conjugated Goat Anti-Rabbit IgG(H+L). Cells were incubated with FC Receptor Block prior to fixing and staining. Cells were not fixed.