

For Research Use Only

# Anti-Human LILRA6/CD85b Rabbit Recombinant Antibody, PBS Only

Catalog Number: 98479-1-PBS



## Basic Information

Catalog Number:

98479-1-PBS

Size:

1mg, 3 mg/ml

Source:

Rabbit

Isotype:

IgG

Immunogen Catalog Number:

EG3776

GenBank Accession Number:

BC156794

GeneID (NCBI):

79168

UNIPROT ID:

Q6PI73

Full Name:

Leukocyte immunoglobulin-like receptor, subfamily A (with TM domain), member 6

Purification Method:

Protein A purification

CloneNo.:

250333G1

## Applications

Tested Applications:

FC

Species Specificity:

human

## Background Information

Leukocyte immunoglobulin-like receptor subfamily A member 6 belongs to the leukocyte immunoglobulin-like receptors (LILRs, also known as ILTs and LIRs). Among 11 family members, inhibitory LILRB3 (ILT5, LIR3) and activating LILRA6 (ILT8) represent a unique homologous receptor pair characterized by highly polymorphic ectodomains. (PMID: 36449053; 24257760)

## Storage

Storage:

Store at -80°C.

Storage Buffer:

PBS only, pH7.3

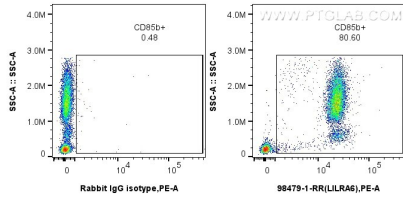
For technical support and original validation data for this product please contact:

T: 1 (888) 4PTGLAB (1-888-478-4522) (toll free in USA), or 1(312) 455-8498 (outside USA)

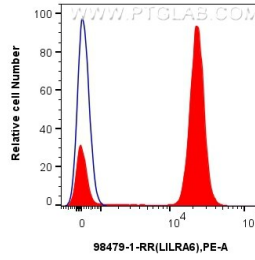
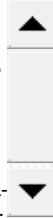
E: [proteintech@ptglab.com](mailto:proteintech@ptglab.com)  
W: [ptglab.com](http://ptglab.com)

This product is exclusively available under Proteintech Group brand and is not available to purchase from any other manufacturer.

## Selected Validation Data



1x10<sup>6</sup> human peripheral blood leukocytes were surface stained with 0.25 ug Anti-Human LILRA6/CD85b Rabbit RecAb (98479-1-RR, Clone:250333G1) or Rabbit IgG Isotype Control RecAb (98136-1-RR, Clone:240953C9), and PE-Conjugated Goat Anti-Rabbit IgG(H+L). Cells were incubated with FC Receptor Block prior to staining. Cells were not fixed. This data was developed using the same antibody clone with 98479-1-PBS in a different storage buffer formulation.



1x10<sup>6</sup> human peripheral blood leukocytes were surface stained with 0.25 ug Anti-Human LILRA6/CD85b Rabbit RecAb (98479-1-RR, Clone:250333G1) (red) or Rabbit IgG Isotype Control RecAb (98136-1-RR, Clone:240953C9) (blue), and PE-Conjugated Goat Anti-Rabbit IgG(H+L). Cells were incubated with FC Receptor Block prior to staining. Cells were not fixed. This data was developed using the same antibody clone with 98479-1-PBS in a different storage

