

For Research Use Only

Anti-Human LILRA6/CD85b Rabbit Recombinant Antibody

Catalog Number: 98479-1-RR



Basic Information

Catalog Number:

98479-1-RR

Size:

100ug, 1000 µg/ml

Source:

Rabbit

Isotype:

IgG

Immunogen Catalog Number:

EG3776

GenBank Accession Number:

BC156794

GeneID (NCBI):

79168

UNIPROT ID:

Q6PI73

Full Name:

Leukocyte immunoglobulin-like receptor, subfamily A (with TM domain), member 6

Purification Method:

Protein A purification

CloneNo.:

250333G1

Recommended Dilutions:

FC: 0.25 ug per 10⁶ cells in a 100 µl suspension

Applications

Tested Applications:

FC

Species Specificity:

human

Positive Controls:

FC : human peripheral blood leukocytes,

Background Information

Leukocyte immunoglobulin-like receptor subfamily A member 6 belongs to the leukocyte immunoglobulin-like receptors (LILRs, also known as ILTs and LIRs). Among 11 family members, inhibitory LILRB3 (ILT5, LIR3) and activating LILRA6 (ILT8) represent a unique homologous receptor pair characterized by highly polymorphic ectodomains. (PMID: 36449053; 24257760)

Storage

Storage:

Store at 2 - 8°C. Stable for one year after shipment.

Storage Buffer:

PBS with 0.09% sodium azide, pH7.3

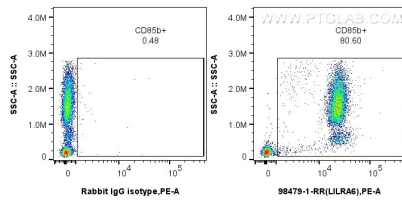
For technical support and original validation data for this product please contact:

T: 1 (888) 4PTGLAB (1-888-478-4522) (toll free in USA), or 1(312) 455-8498 (outside USA)

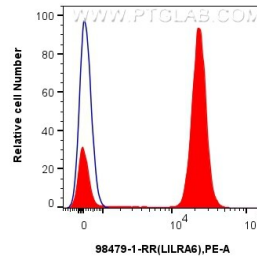
E: proteintech@ptglab.com
W: ptglab.com

This product is exclusively available under Proteintech Group brand and is not available to purchase from any other manufacturer.

Selected Validation Data



1x10⁶ human peripheral blood leukocytes were surface stained with 0.25 ug Anti-Human LILRA6/CD85b Rabbit RecAb (98479-1-RR, Clone:250333G1) or Rabbit IgG Isotype Control RecAb (98136-1-RR, Clone: 240953C9), and PE-Conjugated Goat Anti-Rabbit IgG(H+L). Cells were incubated with FC Receptor Block prior to staining. Cells were not fixed.



1x10⁶ human peripheral blood leukocytes were surface stained with 0.25 ug Anti-Human LILRA6/CD85b Rabbit RecAb (98479-1-RR, Clone:250333G1) (red) or Rabbit IgG Isotype Control RecAb (98136-1-RR, Clone: 240953C9) (blue), and PE-Conjugated Goat Anti-Rabbit IgG(H+L). Cells were incubated with FC Receptor Block prior to staining. Cells were not fixed.