

For Research Use Only

# Anti-Human ART4/CD297 Rabbit Recombinant Antibody

Catalog Number: 98483-1-RR



## Basic Information

Catalog Number:

98483-1-RR

Size:

100ug , 1000 µg/ml

Source:

Rabbit

Isotype:

IgG

Immunogen Catalog Number:

EG2665

GenBank Accession Number:

NM\_021071.4

GeneID (NCBI):

420

UNIPROT ID:

Q93070

Full Name:

ADP-ribosyltransferase 4 (Dombrock blood group)

Calculated MW:

36 kDa

Purification Method:

Protein A purification

CloneNo.:

250103E6

Recommended Dilutions:

FC: 0.25 ug per 10<sup>6</sup> cells in a 100 µl suspension

## Applications

Tested Applications:

FC

Species Specificity:

human

Positive Controls:

FC : Transfected CHO cells,

## Background Information

Ecto-ADP-ribosyltransferase 4 (ART4), also known as CD297, is a GPI-anchored protein that belongs to the ecto-ADP-ribosyltransferase family. ART4 is the carrier of the Dombrock blood group alloantigens (Do). It is prominently expressed on the surface of erythrocytes and at lower levels also by endothelial cells, monocytes, and the KU-812 leukemia cell line. (PMID: 24478605; 16168396)

## Storage

Storage:

Store at 2 - 8°C. Stable for one year after shipment.

Storage Buffer:

PBS with 0.09% sodium azide, pH7.3

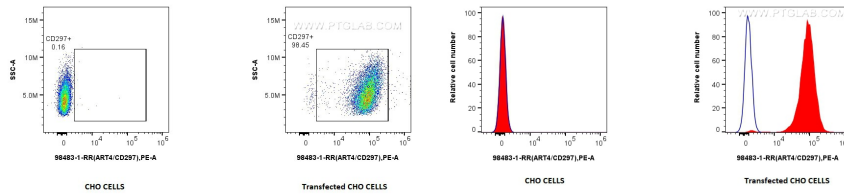
For technical support and original validation data for this product please contact:

T: 1 (888) 4PTGLAB (1-888-478-4522) (toll free in USA), or 1(312) 455-8498 (outside USA)

E: [proteintech@ptglab.com](mailto:proteintech@ptglab.com)  
W: [ptglab.com](http://ptglab.com)

This product is exclusively available under Proteintech Group brand and is not available to purchase from any other manufacturer.

## Selected Validation Data



1x10<sup>6</sup> CHO cells or ART4/CD297 transfected CHO cells were surface stained with 0.25 ug Anti-Human ART4/CD297 Rabbit RecAb (98483-1-RR, Clone: 250103E6) and PE-conjugated Goat Anti-Rabbit IgG. Cells were not fixed.

1x10<sup>6</sup> CHO cells or ART4/CD297 transfected CHO cells were surface stained with 0.25 ug Anti-Human ART4/CD297 Rabbit RecAb (98483-1-RR, Clone: 250103E6) (red) or 0.25 ug Rabbit IgG Isotype Control RecAb (98136-1-RR, Clone: 240953C9) (blue), and PE-conjugated Goat Anti-Rabbit IgG. Cells were not fixed.