

For Research Use Only

Anti-Mouse ENPEP Rabbit Recombinant Antibody, PBS Only

Catalog Number: 98489-3-PBS



Basic Information

Catalog Number:

98489-3-PBS

Size:

1mg, 3 mg/ml

Source:

Rabbit

Isotype:

IgG

Immunogen Catalog Number:

EG4233

GenBank Accession Number:

NM_007934.3

GeneID (NCBI):

13809

UNIPROT ID:

P16406

Full Name:

glutamyl aminopeptidase

Calculated MW:

108 kDa

Purification Method:

Protein A purification

CloneNo.:

250659C1

Applications

Tested Applications:

FC

Species Specificity:

mouse

Background Information

ENPEP is the gene encoding the protein glutamyl aminopeptidase, also known as aminopeptidase A (APA), human kidney differentiation antigen (gp160). A type 2 membrane zinc metalloenzyme, APA is a general-purpose protease that primarily serves to cleave the acidic N-terminal aspartate and glutamyl residues of a variety of peptides, most significantly angiotensin 2 (ANG2, ang1-8), cholecystokinin-8 (CCK8), and neurokinin A. The presence of Ca²⁺ augments both the enzymatic efficiency and specificity of APA, increasing its selectivity towards the aforementioned acidic amino acids. Conversely, in the absence of calcium, APA can bind a wider range of N-terminal neutral and basic amino acids, some of which are cleaved, while others bind without proteolysis.

Storage

Storage:

Store at -80°C.

Storage Buffer:

PBS only, pH7.3

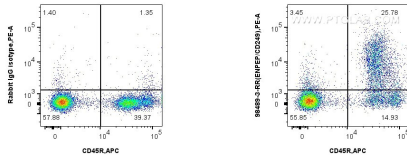
For technical support and original validation data for this product please contact:

T: 1 (888) 4PTGLAB (1-888-478-4522) (toll free in USA), or 1(312) 455-8498 (outside USA)

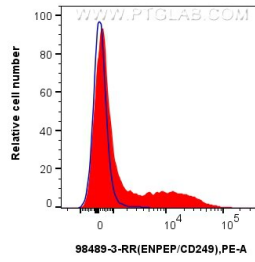
E: proteintech@ptglab.com
W: ptglab.com

This product is exclusively available under Proteintech Group brand and is not available to purchase from any other manufacturer.

Selected Validation Data



1x10⁶ mouse bone marrow cells were surface stained with 0.25 ug Anti-Mouse ENPEP Rabbit RecAb (98489-3-RR, Clone:250659C1) or 0.25 ug Rabbit IgG Isotype Control RecAb (98136-1-RR, Clone: 240953C9), and PE-conjugated Goat Anti-Mouse CD45R. Cells were not fixed. This data was developed using the same antibody clone with 98489-3-PBS in a different storage buffer formulation.



1x10⁶ mouse bone marrow cells were surface stained with 0.25 ug Anti-Mouse ENPEP Rabbit RecAb (98489-3-RR, Clone: 250659C1) (red) or 0.25 ug Rabbit IgG Isotype Control RecAb (98136-1-RR, Clone: 240953C9) (blue), and PE-conjugated Goat Anti-Mouse CD45R. Cells were not fixed. This data was developed using the same antibody clone with 98489-3-PBS in a different storage buffer formulation.