

For Research Use Only

Anti-Mouse ENPEP Rabbit Recombinant Antibody

Catalog Number: 98489-3-RR



Basic Information

Catalog Number: 98489-3-RR	GenBank Accession Number: NM_007934.3	Purification Method: Protein A purification
Size: 100ug , 1000 µg/ml	GeneID (NCBI): 13809	CloneNo.: 250659C1
Source: Rabbit	UNIPROT ID: P16406	Recommended Dilutions: FC: 0.25 ug per 10 ⁶ cells in a 100 µl suspension
Isotype: IgG	Full Name: glutamyl aminopeptidase	
Immunogen Catalog Number: EG4233	Calculated MW: 108 kDa	

Applications

Tested Applications: FC	Positive Controls: FC : mouse bone marrow cells,
Species Specificity: mouse	

Background Information

ENPEP is the gene encoding the protein glutamyl aminopeptidase, also known as aminopeptidase A (APA), human kidney differentiation antigen (gp160). A type 2 membrane zinc metalloenzyme, APA is a general-purpose protease that primarily serves to cleave the acidic N-terminal aspartate and glutamyl residues of a variety of peptides, most significantly angiotensin 2 (ANG2, ang1-8), cholecystokinin-8 (CCK8), and neurokinin A. The presence of Ca²⁺ augments both the enzymatic efficiency and specificity of APA, increasing its selectivity towards the aforementioned acidic amino acids. Conversely, in the absence of calcium, APA can bind a wider range of N-terminal neutral and basic amino acids, some of which are cleaved, while others bind without proteolysis.

Storage

Storage:
Store at 2 - 8°C. Stable for one year after shipment.
Storage Buffer:
PBS with 0.09% sodium azide, pH7.3

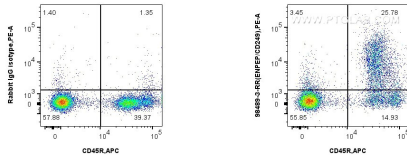
For technical support and original validation data for this product please contact:

T: 1 (888) 4PTGLAB (1-888-478-4522) (toll free in USA), or 1(312) 455-8498 (outside USA)

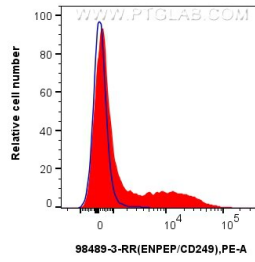
E: proteintech@ptglab.com
W: ptglab.com

This product is exclusively available under Proteintech Group brand and is not available to purchase from any other manufacturer.

Selected Validation Data



1x10⁶ mouse bone marrow cells were surface stained with 0.25 ug Anti-Mouse ENPEP Rabbit RecAb (98489-3-RR, Clone:250659C1) or 0.25 ug Rabbit IgG Isotype Control RecAb (98136-1-RR, Clone: 240953C9), and PE-conjugated Goat Anti-Mouse CD45R. Cells were then stained with APC Anti-Mouse CD45R. Cells were not fixed.



1x10⁶ mouse bone marrow cells were surface stained with 0.25 ug Anti-Mouse ENPEP Rabbit RecAb (98489-3-RR, Clone: 250659C1) (red) or 0.25 ug Rabbit IgG Isotype Control RecAb (98136-1-RR, Clone: 240953C9) (blue), and PE-conjugated Goat Anti-Rabbit IgG. Cells were then stained with APC Anti-Mouse CD45R. Cells were not fixed.