

For Research Use Only

# Anti-Human IGSF2/CD101 Rabbit Recombinant Antibody

Catalog Number: 98494-1-RR



## Basic Information

Catalog Number:

98494-1-RR

Size:

100ug , 1000 µg/ml

Source:

Rabbit

Isotype:

IgG

Immunogen Catalog Number:

EG3583

GenBank Accession Number:

NM\_001256106.2

GeneID (NCBI):

9398

UNIPROT ID:

Q93033

Full Name:

immunoglobulin superfamily,  
member 2

Calculated MW:

115 kDa

Purification Method:

Protein A purification

CloneNo.:

250504D4

Recommended Dilutions:

FC: 0.25 ug per 10<sup>6</sup> cells in a 100 µl  
suspension

## Applications

Tested Applications:

FC

Species Specificity:

human

Positive Controls:

FC : human peripheral blood leukocytes,

## Background Information

IGSF2, also known as CD101, is a low abundance protein. Expression of CD101 is found on monocytes, granulocytes and dendritic cells. In addition expression on T lymphocytes is important for cell activation. It plays a role as inhibitor of T-cells proliferation induced by CD3 and inhibits expression of IL2RA on activated T-cells and secretion of IL2.

## Storage

Storage:

Store at 2 - 8°C. Stable for one year after shipment.

Storage Buffer:

PBS with 0.09% sodium azide, pH7.3

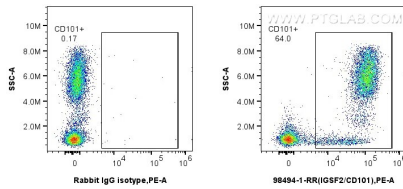
For technical support and original validation data for this product please contact:

T: 1 (888) 4PTGLAB (1-888-478-4522) (toll free  
in USA), or 1(312) 455-8498 (outside USA)

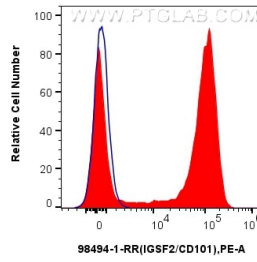
E: [proteintech@ptglab.com](mailto:proteintech@ptglab.com)  
W: [ptglab.com](http://ptglab.com)

**This product is exclusively available under Proteintech Group brand and is not available to purchase from any other manufacturer.**

## Selected Validation Data



1x10<sup>6</sup> human peripheral blood leukocytes were surface stained with 0.25 ug Anti-Human IGSF2/CD101 Rabbit RecAb (98494-1-RR, Clone: 250504D4) or 0.25 ug Rabbit IgG Isotype Control RecAb (98136-1-RR, Clone: 240953C9), and PE-Conjugated Goat Anti-Rabbit IgG(H+L). Cells were not fixed.



1x10<sup>6</sup> human peripheral blood leukocytes were surface stained with 0.25 ug Anti-Human IGSF2/CD101 Rabbit RecAb (98494-1-RR, Clone: 250504D4) (red) or 0.25 ug Rabbit IgG Isotype Control RecAb (98136-1-RR, Clone: 240953C9) (blue), and PE-Conjugated Goat Anti-Rabbit IgG(H+L). Cells were not fixed.