

For Research Use Only

Anti-Mouse CCL1 Rabbit Recombinant Antibody

Catalog Number: 98502-2-RR



Basic Information

| | | |
|--|---|---|
| Catalog Number: 98502-2-RR | GenBank Accession Number: NM_011329.3 | Purification Method: Protein A purification |
| Size: 100ug , 1000 µg/ml | GeneID (NCBI): 20290 | CloneNo.: 250094D6 |
| Source: Rabbit | UNIPROT ID: P10146-1 | Recommended Dilutions: FC (Intra): 0.25 ug per 10 ⁶ cells in a 100 µl suspension |
| Isotype: IgG | Full Name: chemokine (C-C motif) ligand 1 | |
| Immunogen Catalog Number: EG3293 | Calculated MW: 10KD | |

Applications

| | |
|---|---|
| Tested Applications: FC (Intra) | Positive Controls: FC (Intra) : Transfected HEK-293T cells, |
| Species Specificity: mouse | |

Background Information

CCL1, also known as I-309 in human or TCA-3 in mice, is a small glycoprotein belonging to the CC chemokine family. It is predominantly expressed by activated T cells, monocytes, and endothelial cells, and primarily acts as a chemoattractant for monocytes and T cells. CCL1 binds to the receptor CCR8, which is expressed on monocytes, neutrophils, and T cells, including within the thymus. This chemokine may perform dual functions: as an inflammatory chemokine during leukocyte migration into inflammatory sites and as a constitutive chemokine during T cell selection in the thymus. Furthermore, CCL1 has been associated with allergic inflammation and the recruitment of Th2 cells, suggesting a role in allergic diseases such as asthma.

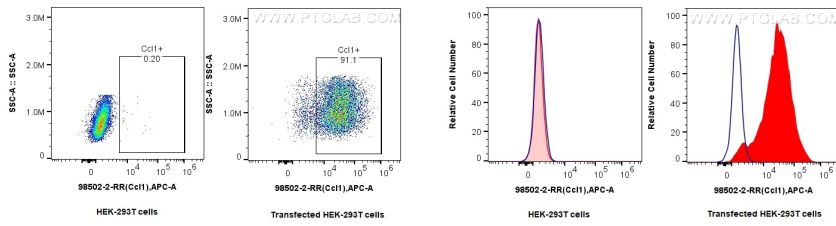
Storage

Storage:
Store at 2 - 8°C. Stable for one year after shipment.
Storage Buffer:
PBS with 0.09% sodium azide, pH7.3

For technical support and original validation data for this product please contact:
T: 1 (888) 4PTGLAB (1-888-478-4522) (toll free in USA), or 1(312) 455-8498 (outside USA) E: proteintech@ptglab.com
W: ptglab.com

This product is exclusively available under Proteintech Group brand and is not available to purchase from any other manufacturer.

Selected Validation Data



1x10⁶ HEK-293T cells or CCL1-transfected HEK-293T cells were intracellularly stained with 0.25 ug Anti-Mouse CCL1 Rabbit RecAb (98502-2-RR, Clone: 250094D6) and APC-Conjugated Goat Anti-Rabbit IgG(H+L). Cells were fixed with 4% PFA and permeabilized with Flow Cytometry Perm Buffer.

1x10⁶ HEK-293T cells or CCL1-transfected HEK-293T cells were intracellularly stained with 0.25 ug Anti-Mouse CCL1 Rabbit RecAb (98502-2-RR, Clone: 250094D6) (red) or 0.25 ug Rabbit IgG Isotype Control RecAb (98136-1-RR, Clone: 240953C9) (blue), and APC-Conjugated Goat Anti-Rabbit IgG(H+L). Cells were fixed with 4% PFA and permeabilized with Flow Cytometry Perm Buffer.