

For Research Use Only

# Anti-Human IL-29 Rabbit Recombinant Antibody, PBS Only

Catalog Number: 98504-1-PBS



## Basic Information

<b>Catalog Number:</b> 98504-1-PBS	<b>GenBank Accession Number:</b> NM_172140.1	<b>Purification Method:</b> Protein A purification
<b>Size:</b> 1mg, 3 mg/ml	<b>GeneID (NCBI):</b> 282618	<b>CloneNo.:</b> 250226G7
<b>Source:</b> Rabbit	<b>UNIPROT ID:</b> Q8IU54	
<b>Isotype:</b> IgG	<b>Full Name:</b> interleukin 29 (interferon, lambda 1)	
<b>Immunogen Catalog Number:</b> EG2843	<b>Calculated MW:</b> 22 kDa	

## Applications

**Tested Applications:**  
FC (Intra)

**Species Specificity:**  
human

## Background Information

Interleukin-29 (IL-29) is a cytokine belonging to the Type III interferon family, which has another two subfamilies IL-28A and IL-28B. They are also known as IFN- $\lambda$ 1, IFN- $\lambda$ 2 and IFN- $\lambda$ 3, respectively. IL-29 is produced predominantly by maturing dendritic cells and macrophages. IL-29 plays an important role in the immune response against pathogens and especially against viruses by mechanisms similar to type I interferons. IL-29 receptor signals through JAK-STAT pathways leading to activated expression of interferon-stimulated genes and production of antiviral proteins.

## Storage

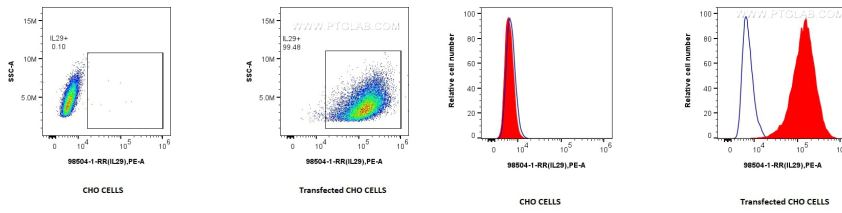
**Storage:**  
Store at -80°C.

**Storage Buffer:**  
PBS only, pH7.3

For technical support and original validation data for this product please contact:  
T: 1 (888) 4PTGLAB (1-888-478-4522) (toll free in USA), or 1(312) 455-8498 (outside USA)      E: proteintech@ptglab.com  
W: ptglab.com

This product is exclusively available under Proteintech Group brand and is not available to purchase from any other manufacturer.

## Selected Validation Data



1x10<sup>6</sup> CHO cells or IL-29 transfected CHO cells were intracellularly stained with 0.25 ug Anti-Human IL-29 Rabbit RecAb (98504-1-RR, Clone: 250226G7) and PE-conjugated Goat Anti-Rabbit IgG. Cells were fixed with 4% PFA and permeabilized with Flow Cytometry Perm Buffer. This data was developed using the same antibody clone with 98504-1-PBS in a different storage buffer formulation.

1x10<sup>6</sup> CHO cells or IL-29 transfected CHO cells were intracellularly stained with 0.25 ug Anti-Human IL-29 Rabbit RecAb (98504-1-RR, Clone: 250226G7) (red) or 0.25 ug Rabbit IgG Isotype Control RecAb (98136-1-RR, Clone: 240953C9) (blue), and PE-conjugated Goat Anti-Rabbit IgG. Cells were fixed with 4% PFA and permeabilized with Flow Cytometry Perm Buffer. This data was developed using the same antibody clone with 98504-1-PBS in a different storage

