

For Research Use Only

Anti-Human TGF beta 1 Rabbit Recombinant Antibody

Catalog Number: 98506-5-RR



Basic Information

Catalog Number:

98506-5-RR

Size:

100ug , 1000 µg/ml

Source:

Rabbit

Isotype:

IgG

Immunogen Catalog Number:

EG0879

GenBank Accession Number:

GeneID (NCBI):

7040

UNIPROT ID:

P01137

Full Name:

transforming growth factor, beta 1

Calculated MW:

44 kDa

Purification Method:

Protein A purification

CloneNo.:

250119E2

Recommended Dilutions:

FC: 0.25 µg per 10⁶ cells in a 100 µl suspension

Applications

Tested Applications:

FC

Species Specificity:

human

Positive Controls:

FC : Anti-CD3/CD28 treated human PBMCs,

Background Information

TGF Beta 1 (TGF-β1) is a pleiotropic cytokine and a member of the TGF-β superfamily (including TGF-β1, TGF-β2, and TGF-β3). It is encoded by the TGFB1 gene and acts as a secreted protein involved in controlling cell growth, proliferation, differentiation, and apoptosis. TGF-β1 is produced by various cell types (e.g., platelets, lymphocytes, macrophages, epithelial cells, and inflammatory cells) and is secreted as a precursor requiring proteolytic activation to yield the mature, biologically active peptide. TGF-β1 plays crucial roles in immune regulation, wound healing, fibrosis, and tissue remodeling (including cardiac injury and fibrosis). It also influences cancer progression by promoting epithelial-to-mesenchymal transition (EMT) and metastasis in tumors.

Storage

Storage:

Store at 2 - 8°C. Stable for one year after shipment.

Storage Buffer:

PBS with 0.09% sodium azide, pH7.3

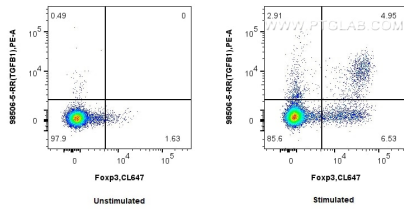
For technical support and original validation data for this product please contact:

T: 1 (888) 4PTGLAB (1-888-478-4522) (toll free in USA), or 1(312) 455-8498 (outside USA)

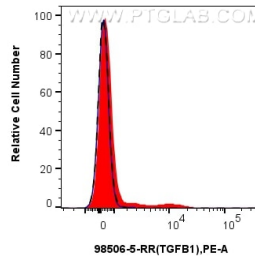
E: proteintech@ptglab.com
W: ptglab.com

This product is exclusively available under Proteintech Group brand and is not available to purchase from any other manufacturer.

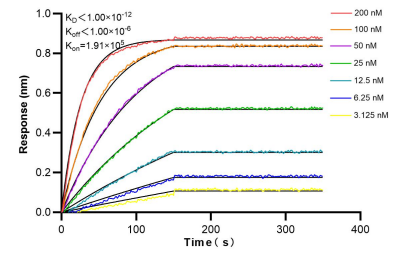
Selected Validation Data



1×10^6 untreated or anti-CD3/CD28 treated human PBMCs were surface stained with 0.25 μ g Anti-Human TGF beta 1 Rabbit RecAb (98506-5-RR, Clone: 250119E2) and PE-Conjugated Goat Anti-Rabbit IgG(H+L). Cells were then fixed and stained with Anti-Human Foxp3. CD4+ cells were pre-gated for analysis.



1×10^6 anti-CD3/CD28 treated human PBMCs were surface stained with 0.25 μ g Anti-Human TGF β 1 Rabbit RecAb (98506-5-RR, Clone: 250119E2) (red) or 0.25 μ g Rabbit IgG Isotype Control RecAb (98136-1-RR, Clone: 240953C9) (blue), and PE-Conjugated Goat Anti-Rabbit IgG(H+L). 1×10^6 untreated human PBMCs were surface stained with 0.25 μ g Anti-Human TGF β 1 Rabbit RecAb (98506-5-RR, Clone: 250119E2) (black, dashed) and PE-Conjugated Goat Anti-Rabbit IgG(H+L).



Bi-layer interferometry (BLI) kinetic assays of 98506-5-RR against Human TGF beta 1 were performed. The affinity constant is below 1 pM.