

For Research Use Only

Anti-Human CEACAM8/CD66b Rabbit Recombinant Antibody

Catalog Number: 98507-2-RR



Basic Information

Catalog Number:

98507-2-RR

Size:

100ug, 1000 µg/ml

Source:

Rabbit

Isotype:

IgG

Immunogen Catalog Number:

EG32133

GenBank Accession Number:

BC026263

GeneID (NCBI):

1088

UNIPROT ID:

P31997

Full Name:

carcinoembryonic antigen-related

cell adhesion molecule 8

Calculated MW:

38 kDa

Purification Method:

Protein A purification

CloneNo.:

242954D11

Recommended Dilutions:

FC: 0.25 ug per 10⁶ cells in a 100 µl suspension

Applications

Tested Applications:

FC

Species Specificity:

human

Positive Controls:

FC : human peripheral blood leukocytes,

Background Information

Carcinoembryonic antigen-related cell adhesion molecule 8 (CEACAM8), also known as CD66b, CGM6 or NCA-95, is a member of the carcinoembryonic antigen (CEA) family which belongs to the immunoglobulin superfamily of cell adhesion molecules (PMID: 16919437). CEACAM8 is a glycosylphosphatidylinositol (GPI)-linked glycoprotein expressed on granulocytes (PMID: 8104998; 18056392). It is involved in regulating adhesion and activation of eosinophils (PMID: 18056392).

Storage

Storage:

Store at 2 - 8°C. Stable for one year after shipment.

Storage Buffer:

PBS with 0.09% sodium azide, pH7.3

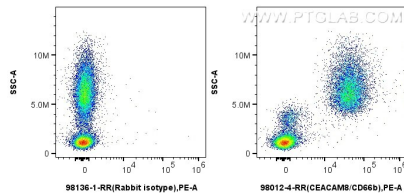
For technical support and original validation data for this product please contact:

T: 1 (888) 4PTGLAB (1-888-478-4522) (toll free in USA), or 1(312) 455-8498 (outside USA)

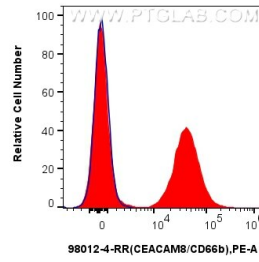
E: proteintech@ptglab.com
W: ptglab.com

This product is exclusively available under Proteintech Group brand and is not available to purchase from any other manufacturer.

Selected Validation Data



1×10^6 human peripheral blood leukocytes were surface stained with 0.25 μ g Anti-Human CEACAM8/CD66b Rabbit RecAb (98012-4-RR, Clone: 242954D11) or Rabbit IgG Isotype Control RecAb (98136-1-RR, Clone: 240953C9), and PE-conjugated Goat Anti-Rabbit IgG. Cells were incubated with FC Receptor Block prior to staining. Cells were not fixed.



1×10^6 human peripheral blood leukocytes were surface stained with 0.25 μ g Anti-Human CEACAM8/CD66b Rabbit RecAb (98012-4-RR, Clone: 242954D11)(red) or Rabbit IgG Isotype Control RecAb (98136-1-RR, Clone: 240953C9) (blue), and PE-conjugated Goat Anti-Rabbit IgG. Cells were incubated with FC Receptor Block prior to staining. Cells were not fixed.