

For Research Use Only

Anti-Mouse ACE2 Rabbit Recombinant Antibody

Catalog Number: 98508-1-RR



Basic Information

Catalog Number:

98508-1-RR

Size:

100ug , 1000 µg/ml

Source:

Rabbit

Isotype:

IgG

Immunogen Catalog Number:

EG2834

GenBank Accession Number:

NM_001130513.1

GeneID (NCBI):

70008

UNIPROT ID:

Q8R0I0-1

Full Name:

angiotensin I converting enzyme (peptidyl-dipeptidase A) 2

Calculated MW:

92 kDa

Purification Method:

Protein A purification

CloneNo.:

250137D6

Recommended Dilutions:

FC: 0.25 ug per 10⁶ cells in a 100 µl suspension

Applications

Tested Applications:

FC

Species Specificity:

mouse

Positive Controls:

FC : Transfected HEK-293T cells,

Background Information

ACE2 (Angiotensin-converting enzyme 2), also named as ACEH, is a zinc metalloprotease of the ACE family and a critical regulator of the reninangiotensin system. ACE2 has a more restricted tissue distribution than ACE, being found predominantly in the heart, kidneys, and testes although low levels have been detected in a variety of tissues (PMID:15983030). ACE2 has been shown to be a functional receptor of the human coronaviruses SARS-CoV and SARS-CoV-2 (PMID: 32142651). The expression level and expression pattern of human ACE2 in different tissues might be critical for the susceptibility, symptoms, and outcome of 2019-nCoV/SARS-CoV-2 infection (PMID: 32133153). It can be used as a potential therapeutic target of SARS-CoV-2 (PMID: 32125455).

Storage

Storage:

Store at 2 - 8°C. Stable for one year after shipment.

Storage Buffer:

PBS with 0.09% sodium azide, pH7.3

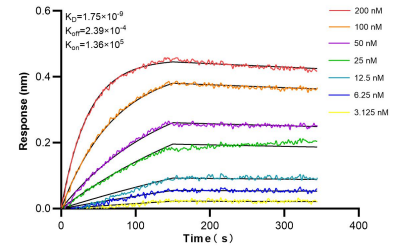
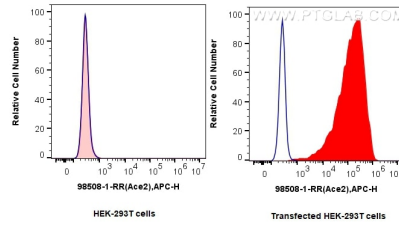
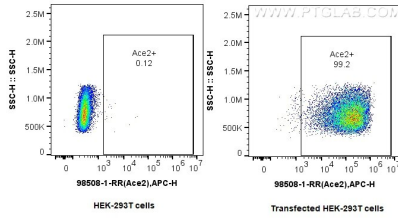
For technical support and original validation data for this product please contact:

T: 1 (888) 4PTGLAB (1-888-478-4522) (toll free in USA), or 1(312) 455-8498 (outside USA)

E: proteintech@ptglab.com
W: ptglab.com

This product is exclusively available under Proteintech Group brand and is not available to purchase from any other manufacturer.

Selected Validation Data



1x10⁶ HEK-293T cells and ACE2-transfected HEK-293T cells were surface stained with 0.25 ug Anti-Mouse Ace2 Rabbit RecAb (98508-1-RR, Clone: 250137D6) and APC-Conjugated Goat Anti-Rabbit IgG(H+L). Cells were not fixed.

1x10⁶ HEK-293T cells and ACE2-transfected HEK-293T cells were surface stained with 0.25 ug Anti-Mouse Ace2 Rabbit RecAb (98508-1-RR, Clone: 250137D6) (red) or 0.25 ug Rabbit IgG Isotype Control RecAb (98136-1-RR, Clone: 240953C9) (blue) and APC-Conjugated Goat Anti-Rabbit IgG(H+L). Cells were not fixed.

Bi-layer interferometry (BLI) kinetic assays of 98508-1-RR against Mouse ACE2 were performed. The affinity constant is 1.75 nM.