

For Research Use Only

Anti-Human BCAM Rabbit Recombinant Antibody

Catalog Number: 98521-3-RR



Basic Information

Catalog Number:

98521-3-RR

Size:

100ug, 1000 µg/ml

Source:

Rabbit

Isotype:

IgG

Immunogen Catalog Number:

EG2567

GenBank Accession Number:

BC050450

GeneID (NCBI):

4059

UNIPROT ID:

P50895

Full Name:

basal cell adhesion molecule
(Lutheran blood group)

Calculated MW:

67 kDa

Purification Method:

Protein A purification

CloneNo.:

250778C11

Recommended Dilutions:

IF/ICC: 1:250-1:1000

FC: 0.25 µg per 10⁶ cells in a 100 µl suspension

Applications

Tested Applications:

IF/ICC, FC

Species Specificity:

human

Positive Controls:

IF/ICC : HT-29 cells,

FC : human peripheral blood erythrocytes,

Background Information

Basal cell adhesion molecule (Lu/BCAM) is a membrane-bound glycoprotein of the immunoglobulin superfamily (IgSF), functioning as a receptor for the extracellular matrix protein, laminin. BCAM (Lutheran/basal cell-adhesion molecule, a glycoprotein) belongs to the immunoglobulin superfamily which contains both Lu blood group and BCAM tumor-associated antigens. Proteomics analysis suggests that BCAM might be a potential biomarker for pancreatic cancer (PMID: 19199705). BCAM, involved in cell adhesion and migration, can also promote tumor metastasis and has been elucidated to play a functional role in the metastasis of thyroid cancer and gastric cancer (PMID: 10728810, 35941663).

Storage

Storage:

Store at 2 - 8°C. Stable for one year after shipment.

Storage Buffer:

PBS with 0.09% sodium azide, pH7.3

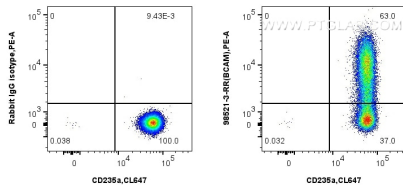
For technical support and original validation data for this product please contact:

T: 1 (888) 4PTGLAB (1-888-478-4522) (toll free in USA), or 1(312) 455-8498 (outside USA)

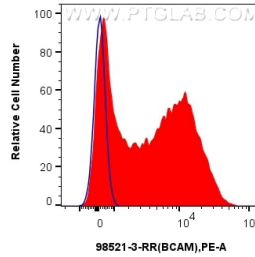
E: proteintech@ptglab.com
W: ptglab.com

This product is exclusively available under Proteintech Group brand and is not available to purchase from any other manufacturer.

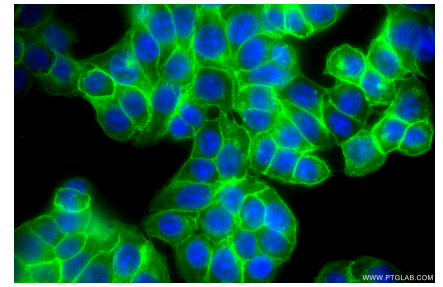
Selected Validation Data



1x10⁶ human peripheral blood erythrocytes were surface stained with 0.25 ug Anti-Human BCAM Rabbit RecAb (98521-3-RR, Clone: 250778C11) or 0.25 ug Rabbit IgG Isotype Control RecAb (98136-1-RR, Clone: 240953C9), and PE-Conjugated Goat Anti-Rabbit IgG(H+L). Cells were not fixed.



1x10⁶ human peripheral blood erythrocytes were surface stained with 0.25 ug Anti-Human BCAM Rabbit RecAb (98521-3-RR, Clone: 250778C11) (red) or 0.25 ug Rabbit IgG Isotype Control RecAb (98136-1-RR, Clone: 240953C9) (blue), and PE-Conjugated Goat Anti-Rabbit IgG(H+L). Cells were not fixed.



Immunofluorescent analysis of (-20°C Methanol) fixed HT-29 cells using BCAM antibody (98521-3-RR, Clone: 250778C11) at dilution of 1:500 and CoraLite®488-Conjugated Goat Anti-Rabbit IgG(H+L) (SA00013-2).