

For Research Use Only

# Anti-Human IGSF8/CD316 Rabbit Recombinant Antibody

Catalog Number: 98530-2-RR



## Basic Information

Catalog Number:

98530-2-RR

Size:

100ug, 1000 µg/ml

Source:

Rabbit

Isotype:

IgG

Immunogen Catalog Number:

EG2664

GenBank Accession Number:

NM\_052868.6

GeneID (NCBI):

93185

UNIPROT ID:

Q969P0-1

Full Name:

immunoglobulin superfamily, member 8

Calculated MW:

65 kDa

Purification Method:

Protein A purification

CloneNo.:

243019D8

Recommended Dilutions:

FC: 0.25 µg per 10<sup>6</sup> cells in a 100 µl suspension

## Applications

Tested Applications:

FC

Species Specificity:

human

Positive Controls:

FC : human peripheral whole blood cells, Transfected CHO cells

## Background Information

IGSF8 is also known as CD316, PGRL (PG regulatory-like protein), KAI/CD82-associated surface molecule, and CD81-binding partner 3 (CD81P3). IGSF8 contains four immunoglobulin domains, a transmembrane region, and a short cytoplasmic tail that does not bear any signature motif for signal transduction. IGSF8 is abundantly expressed in olfactory sensory neuron (OSN) axons and their developing synapses. (PMID: 17785435, PMID: 22687584)

## Storage

Storage:

Store at 2 - 8°C. Stable for one year after shipment.

Storage Buffer:

PBS with 0.09% sodium azide, pH7.3

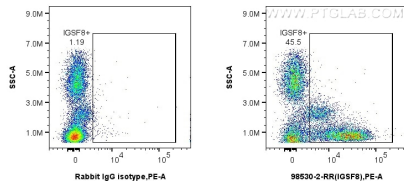
For technical support and original validation data for this product please contact:

T: 1 (888) 4PTGLAB (1-888-478-4522) (toll free in USA), or 1(312) 455-8498 (outside USA)

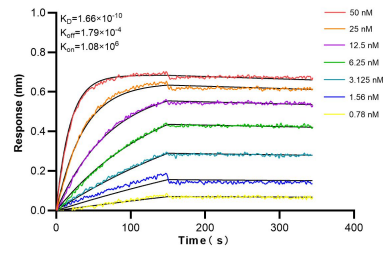
E: [proteintech@ptglab.com](mailto:proteintech@ptglab.com)  
W: [ptglab.com](http://ptglab.com)

This product is exclusively available under Proteintech Group brand and is not available to purchase from any other manufacturer.

## Selected Validation Data



1x10<sup>6</sup> human peripheral whole blood cells were surface stained with 0.25 ug Anti-Human IGSF8/CD316 Rabbit RecAb (98530-2-RR, Clone: 243019D8) or 0.25 ug Rabbit IgG Isotype Control RecAb (98136-1-RR, Clone: 240953C9), and PE-Conjugated Goat Anti-Rabbit IgG(H+L). Cells were incubated with FC Receptor Block prior to staining. Cells were not fixed.



Bilayer interferometry (BLI) kinetic assays of 98530-2-RR against Human IGSF8/CD316 were performed. The affinity constant is 0.166 nM.