

For Research Use Only

Anti-Human CD45RB/RAB Rabbit Recombinant Antibody

Catalog Number: 98531-5-RR



Basic Information

Catalog Number:

98531-5-RR

Size:

100ug, 1000 µg/ml

Source:

Rabbit

Isotype:

IgG

GenBank Accession Number:

NM_002838.4

GeneID (NCBI):

5788

ENSEMBL Gene ID:

ENSG00000081237

UNIPROT ID:

P08575-3

Full Name:

protein tyrosine phosphatase, receptor type, C

Calculated MW:

147 kDa

Purification Method:

Protein A purification

CloneNo.:

242918F3

Recommended Dilutions:

FC: 0.25 µg per 10⁶ cells in a 100 µl suspension

Applications

Tested Applications:

FC

Species Specificity:

human

Positive Controls:

FC : human peripheral blood leukocyte, transfected CHO cells

Background Information

CD45RB and CD45RAB are specific isoforms of CD45, a receptor-type protein tyrosine phosphatase (PTP) found on the surface of all nucleated hematopoietic cells, except mature erythrocytes and platelets. They serve as essential phenotypic markers to distinguish naïve T lymphocytes from antigen-experienced memory/effector T cells. CD45RB and CD45RAB designations refer to specific isoforms of CD45 generated through alternative splicing of three variable exons (4, 5, and 6) in the PTPRC gene. These exons encode extracellular domains A, B, and C, respectively, which contain O-linked glycosylation sites that affect the molecule's size, charge, and ligand-binding properties. This antibody can detect CD45RB (contains exons B only) and CD45RAB (contains both exons A and B), but not CD45RABC (contain all three exons) or CD45RBC (contain exons B and C).

Storage

Storage:

Store at 2 - 8°C. Stable for one year after shipment.

Storage Buffer:

PBS with 0.09% sodium azide, pH7.3

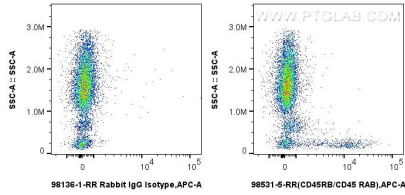
For technical support and original validation data for this product please contact:

T: 1 (888) 4PTGLAB (1-888-478-4522) (toll free in USA), or 1(312) 455-8498 (outside USA)

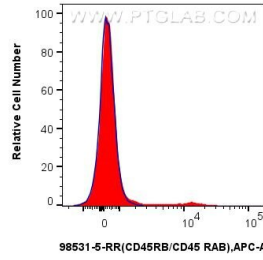
E: proteintech@ptglab.com
W: ptglab.com

This product is exclusively available under Proteintech Group brand and is not available to purchase from any other manufacturer.

Selected Validation Data



1x10⁶ human peripheral blood leukocyte were surface stained with 0.25 ug Anti-Human CD45RB/RAB Rabbit RecAb (98531-5-RR, Clone:242918F3), or 0.25 ug Rabbit IgG Isotype Control RecAb (98136-1-RR, Clone: 240953C9) and APC-Conjugated Goat Anti-Rabbit IgG(H+L). Cells were incubated with FC Receptor Block prior to staining. Cells were not fixed.



1x10⁶ human peripheral blood leukocyte were surface stained with 0.25 ug Anti-Human PTPRC/CD45-RB Rabbit RecAb (98531-5-RR, Clone:242918F3) (red), or 0.25 ug Rabbit IgG Isotype Control RecAb (98136-1-RR, Clone: 240953C9) (blue) and APC-Conjugated Goat Anti-Rabbit IgG(H+L). Cells were incubated with FC Receptor Block prior to staining. Cells were not fixed.