

For Research Use Only

Anti-Human PLXNC1 Rabbit Recombinant Antibody, PBS Only

Catalog Number: 98534-2-PBS



Basic Information

Catalog Number: 98534-2-PBS	GenBank Accession Number: NM_005761.3	Purification Method: Protein A purification
Size: 1mg, 3 mg/ml	GeneID (NCBI): 10154	CloneNo.: 250374F2
Source: Rabbit	UNIPROT ID: O60486	
Isotype: IgG	Full Name: plexin C1	
Immunogen Catalog Number: EG2721	Calculated MW: 176 kDa	

Applications

Tested Applications:
FC

Species Specificity:
human

Background Information

PLXNC1 (Plexin-C1) is a semaphorin receptor that bridges extracellular guidance cues to intracellular GTPase signaling, influencing cell adhesion, migration, and immune modulation. Predominantly expressed in neuronal, epithelial, and immune tissues, PLXNC1 regulates axon guidance and inflammatory balance via SEMA7A-dependent pathways. Dysregulated PLXNC1 signaling contributes to cancer progression, immune dysregulation, and neuronal pathologies, highlighting its versatile role in cell communication and morphogenesis.

Storage

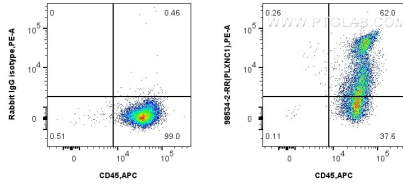
Storage:
Store at -80°C.

Storage Buffer:
PBS only, pH7.3

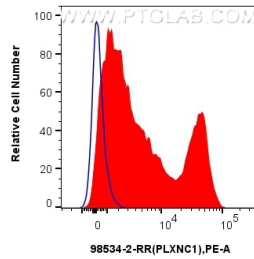
For technical support and original validation data for this product please contact:
T: 1 (888) 4PTGLAB (1-888-478-4522) (toll free in USA), or 1(312) 455-8498 (outside USA) E: proteintech@ptglab.com
W: ptglab.com

This product is exclusively available under Proteintech Group brand and is not available to purchase from any other manufacturer.

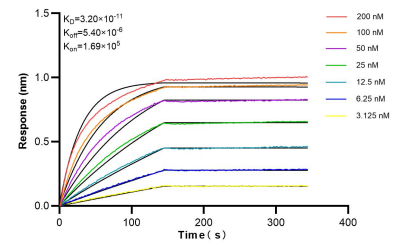
Selected Validation Data



1x10⁶ human PBMCs were surface stained with 0.25 ug Anti-Human PLXNC1 Rabbit RecAb (98534-2-RR, Clone: 250374F2) or 0.25 ug Rabbit IgG Isotype Control RecAb (98136-1-RR, Clone: 240953C9), and PE-Conjugated Goat Anti-Rabbit IgG(H+L). Cells were then stained with APC Anti-Human CD45 Rabbit Recombinant Antibody (APC-98117, Clone: 241670E10). Cells were incubated with FC Receptor Block prior to staining. Cells were not fixed. This data was developed using the



1x10⁶ human PBMCs were surface stained with 0.25 ug Anti-Human PLXNC1 Rabbit RecAb (98534-2-RR, Clone: 250374F2) (red) or 0.25 ug Rabbit IgG Isotype Control RecAb (98136-1-RR, Clone: 240953C9) (blue), and PE-Conjugated Goat Anti-Rabbit IgG(H+L). Cells were incubated with FC Receptor Block prior to staining. Cells were not fixed. This data was developed using the same antibody clone with 98534-2-PBS in a different storage buffer formulation.



Biological layer interferometry (BLI) kinetic assays of 98534-2-RR against Human PLXNC1 were performed. The affinity constant is 32.0 pM.