

For Research Use Only

Anti-Human PLXNC1 Rabbit Recombinant Antibody

Catalog Number: 98534-2-RR



Basic Information

Catalog Number:

98534-2-RR

Size:

100ug, 1000 µg/ml

Source:

Rabbit

Isotype:

IgG

Immunogen Catalog Number:

EG2721

GenBank Accession Number:

NM_005761.3

GeneID (NCBI):

10154

UNIPROT ID:

O60486

Full Name:

plexin C1

Calculated MW:

176 kDa

Purification Method:

Protein A purification

CloneNo.:

250374F2

Recommended Dilutions:

FC: 0.25 µg per 10⁶ cells in a 100 µl suspension

Applications

Tested Applications:

FC

Species Specificity:

human

Positive Controls:

FC : human PBMCs, Transfected CHO cells

Background Information

PLXNC1 (Plexin-C1) is a semaphorin receptor that bridges extracellular guidance cues to intracellular GTPase signaling, influencing cell adhesion, migration, and immune modulation. Predominantly expressed in neuronal, epithelial, and immune tissues, PLXNC1 regulates axon guidance and inflammatory balance via SEMA7A-dependent pathways. Dysregulated PLXNC1 signaling contributes to cancer progression, immune dysregulation, and neuronal pathologies, highlighting its versatile role in cell communication and morphogenesis.

Storage

Storage:

Store at 2 - 8°C. Stable for one year after shipment.

Storage Buffer:

PBS with 0.09% sodium azide, pH7.3

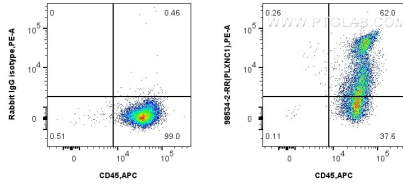
For technical support and original validation data for this product please contact:

T: 1 (888) 4PTGLAB (1-888-478-4522) (toll free in USA), or 1(312) 455-8498 (outside USA)

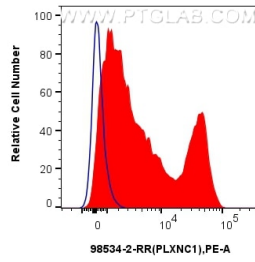
E: proteintech@ptglab.com
W: ptglab.com

This product is exclusively available under Proteintech Group brand and is not available to purchase from any other manufacturer.

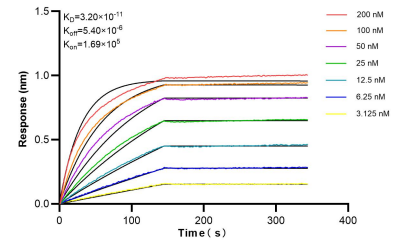
Selected Validation Data



1x10⁶ human PBMCs were surface stained with 0.25 ug Anti-Human PLXNC1 Rabbit RecAb (98534-2-RR, Clone: 250374F2) or 0.25 ug Rabbit IgG Isotype Control RecAb (98136-1-RR, Clone: 240953C9), and PE-Conjugated Goat Anti-Rabbit IgG(H+L). Cells were then stained with APC Anti-Human CD45 Rabbit Recombinant Antibody (APC-98117, Clone: 241670E10). Cells were incubated with FC Receptor Block prior to staining. Cells were not fixed.



1x10⁶ human PBMCs were surface stained with 0.25 ug Anti-Human PLXNC1 Rabbit RecAb (98534-2-RR, Clone: 250374F2) (red) or 0.25 ug Rabbit IgG Isotype Control RecAb (98136-1-RR, Clone: 240953C9) (blue), and PE-Conjugated Goat Anti-Rabbit IgG(H+L). Cells were incubated with FC Receptor Block prior to staining. Cells were not fixed.



Bi-layer interferometry (BLI) kinetic assays of 98534-2-RR against Human PLXNC1 were performed. The affinity constant is 32.0 pM.