

For Research Use Only

Anti-Mouse CD107a / LAMP1 Rabbit Recombinant Antibody

Catalog Number: 98537-2-RR



Basic Information

Catalog Number:

98537-2-RR

Size:

100ug, 1000 µg/ml

Source:

Rabbit

Isotype:

IgG

Immunogen Catalog Number:

EG3858

GenBank Accession Number:

NM_010684.3

GeneID (NCBI):

16783

UNIPROT ID:

P11438

Full Name:

lysosomal-associated membrane protein 1

Calculated MW:

44 kDa

Purification Method:

Protein A purification

CloneNo.:

250972H5

Recommended Dilutions:

IF-P: 1:50-1:500

IF/ICC: 1:200-1:800

FC: 0.25 µg per 10⁶ cells in a 100 µl suspension

Applications

Tested Applications:

IF/ICC, IF-P, FC

Species Specificity:

mouse

Positive Controls:

IF-P : mouse liver tissue,

IF/ICC : C2C12 cells,

FC : mouse peritoneal macrophages,

Background Information

LAMP1 (CD107a) is a heavily glycosylated membrane protein enriched in the lysosomal membrane. LAMP1 is extensively glycosylated with asparagine-linked oligosaccharides which protect it from intracellular proteolysis (PMID: 10521503). Although LAMP1 is expressed largely in the endosome-lysosomal membrane of cells, it is also found on the plasma membrane (PMID: 16168398). Elevated LAMP1 expression at the cell surface has also been detected during platelet and granulocytic cell activation, as well as in some tumor cells (PMID: 29085473). LAMP1 functions to provide selectins with carbohydrate ligands. This protein has also been shown to be a marker of degranulation on lymphocytes such as CD8+ and NK cells and may also play a role in tumor cell differentiation and metastasis (PMID: 18835598; 29085473; 9426697).

Storage

Storage:

Store at 2 - 8°C. Stable for one year after shipment.

Storage Buffer:

PBS with 0.09% sodium azide, pH7.3

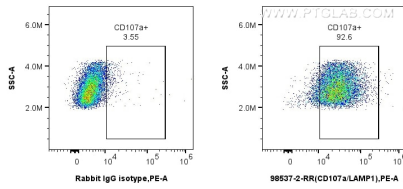
For technical support and original validation data for this product please contact:

T: 1 (888) 4PTGLAB (1-888-478-4522) (toll free in USA), or 1(312) 455-8498 (outside USA)

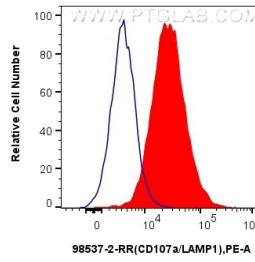
E: proteintech@ptglab.com
W: ptglab.com

This product is exclusively available under Proteintech Group brand and is not available to purchase from any other manufacturer.

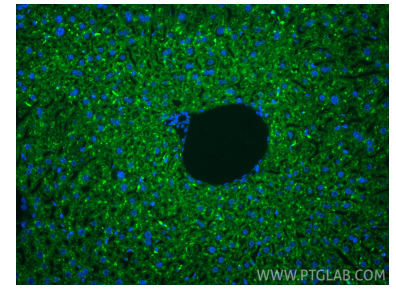
Selected Validation Data



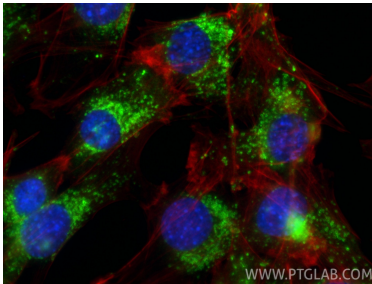
1x10⁶ mouse peritoneal macrophages were surface stained with 0.25 ug Anti-Mouse LAMP-1/CD107a Rabbit RecAb (98537-2-RR, Clone: 250972H5) or 0.25 ug Rabbit IgG Isotype Control RecAb (98136-1-RR, Clone: 240953C9), and PE-Conjugated Goat Anti-Rabbit IgG(H+L). Cells were not fixed.



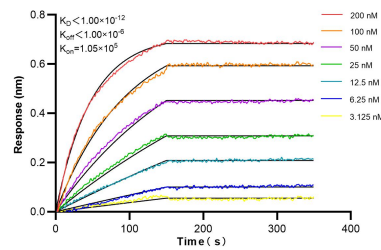
1x10⁶ mouse peritoneal macrophages were surface stained with 0.25 ug Anti-Mouse LAMP-1/CD107a Rabbit RecAb (98537-2-RR, Clone: 250972H5) (red) or 0.25 ug Rabbit IgG Isotype Control RecAb (98136-1-RR, Clone: 240953C9) (blue), and PE-Conjugated Goat Anti-Rabbit IgG(H+L). Cells were not fixed.



Immunofluorescent analysis of (4% PFA) fixed paraffin-embedded mouse liver tissue using LAMP-1/CD107a antibody (98537-2-RR, Clone: 250972H5) at dilution of 1:200 and CoraLite®488-Conjugated Goat Anti-Rabbit IgG(H+L) (SA00013-2). Heat mediated antigen retrieval with Tris-EDTA buffer (pH 9.0).



Immunofluorescent analysis of (4% PFA) fixed C2C12 cells using LAMP-1/CD107a antibody (98537-2-RR, Clone: 250972H5) at dilution of 1:400 and CoraLite®488-Conjugated Goat Anti-Rabbit IgG(H+L) (SA00013-2), CL594-phalloidin (red).



Biolayer interferometry (BLI) kinetic assays of 98537-2-RR against Mouse CD107a / LAMP1 were performed. The affinity constant is below 1 pM.