

For Research Use Only

Anti-Mouse SLAMF6 Rabbit Recombinant Antibody

Catalog Number: 98541-1-RR



Basic Information

Catalog Number:

98541-1-RR

Size:

100ug, 1000 µg/ml

Source:

Rabbit

Isotype:

IgG

Immunogen Catalog Number:

EG5249

GenBank Accession Number:

NM_030710.2

GeneID (NCBI):

30925

UNIPROT ID:

Q9ET39-2

Full Name:

SLAM family member 6

Calculated MW:

36 kDa

Purification Method:

Protein A purification

CloneNo.:

251099G11

Recommended Dilutions:

FC: 0.25 µg per 10⁶ cells in a 100 µl suspension

Applications

Tested Applications:

FC

Species Specificity:

mouse

Positive Controls:

FC : mouse splenocytes,

Background Information

Signaling lymphocyte activation molecule 6 (SLAMF6) (Ly108 in mice, NTB-A or SF2000 in humans) is a homophilic receptor belonging to the superfamily immunoglobulin (Ig) domain-containing molecules (PMID:31199820). SLAMF6 is a type I transmembrane protein with two extracellular immunoglobins (Ig)-like domains and three cytoplasmic tyrosine-based signaling motifs, one of which is immunoreceptor tyrosine-based switch motif (PMID:31315913). SLAMF6 is expressed on a wide variety of immune cells including T cells (also TFH), B cells, NK cells (expressed in humans only), double positive thymocytes, eosinophils, and neutrophils (mouse only) (PMID:11862385).

Storage

Storage:

Store at 2 - 8°C. Stable for one year after shipment.

Storage Buffer:

PBS with 0.09% sodium azide, pH7.3

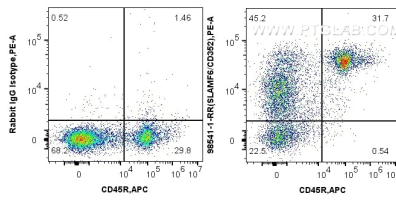
For technical support and original validation data for this product please contact:

T: 1 (888) 4PTGLAB (1-888-478-4522) (toll free in USA), or 1(312) 455-8498 (outside USA)

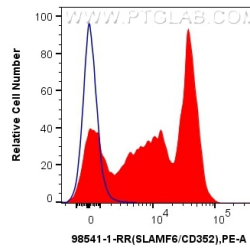
E: proteintech@ptglab.com
W: ptglab.com

This product is exclusively available under Proteintech Group brand and is not available to purchase from any other manufacturer.

Selected Validation Data



1x10⁶ mouse splenocytes were surface stained with 0.25 ug Anti-Mouse SLAMF6 Rabbit RecAb (98541-1-RR, Clone: 251099G11) or 0.25 ug Rabbit IgG Isotype Control RecAb (98136-1-RR, Clone: 240953C9), and PE-Conjugated Goat Anti-Rabbit IgG(H+L). Cells were co-stained with 0.25 ug APC Anti-Mouse CD45R (B220) (RA3-6B2) (APC-65139, Clone: RA3-6B2). Cells were not fixed.



1x10⁶ mouse splenocytes were surface stained with 0.25 ug Anti-Mouse SLAMF6 Rabbit RecAb (98541-1-RR, Clone:251099G11) (red) or 0.25 ug Rabbit IgG Isotype Control RecAb (98136-1-RR, Clone: 240953C9) (blue), and PE-Conjugated Goat Anti-Rabbit IgG(H+L). Cells were not fixed.