

For Research Use Only

# Anti-Human FCRL1 Rabbit Recombinant Antibody, PBS Only

Catalog Number: 98557-1-PBS



## Basic Information

Catalog Number:

98557-1-PBS

Size:

1mg, 3 mg/ml

Source:

Rabbit

Isotype:

IgG

Immunogen Catalog Number:

EG3713

GenBank Accession Number:

BC033690

GeneID (NCBI):

115350

UNIPROT ID:

Q96LA6

Full Name:

Fc receptor-like 1

Calculated MW:

429 aa, 47 kDa

Purification Method:

Protein A purification

CloneNo.:

251080E1

## Applications

Tested Applications:

FC

Species Specificity:

human

## Background Information

Fc receptor-like protein 1 (FCRL1) is a type I transmembrane glycoprotein that plays a crucial role in regulating B-cell receptor (BCR)-mediated signaling responses (PMID:15479727). It contains intracellular tyrosine-based motifs that can modulate BCR signaling, leading to changes in calcium flux, proliferation, and antibody production (PMID: 37822931). FCRL1 is involved in regulating B-cell development and activation, with its signaling pathways influencing ERK activation through interactions with proteins such as GRB2. This regulation is essential for maintaining B-cell homeostasis and preventing the development of autoreactive B cells (PMID: 34697226).

## Storage

Storage:

Store at -80°C.

Storage Buffer:

PBS only, pH7.3

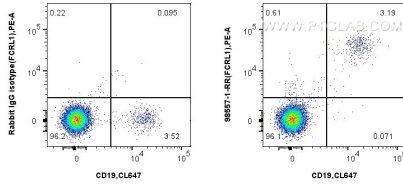
For technical support and original validation data for this product please contact:

T: 1 (888) 4PTGLAB (1-888-478-4522) (toll free in USA), or 1(312) 455-8498 (outside USA)

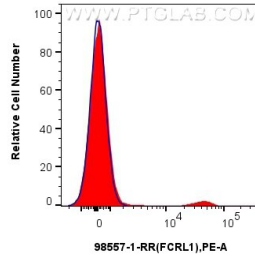
E: [proteintech@ptglab.com](mailto:proteintech@ptglab.com)  
W: [ptglab.com](http://ptglab.com)

**This product is exclusively available under Proteintech Group brand and is not available to purchase from any other manufacturer.**

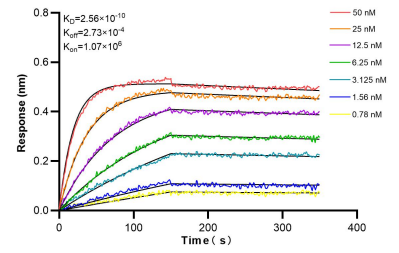
## Selected Validation Data



1x10<sup>6</sup> human PBMCs were surface stained with 0.25 ug Anti-Human FCRL1 Rabbit RecAb (98557-1-RR, Clone: 251080E1) or 0.25 ug Rabbit IgG Isotype Control RecAb (98136-1-RR, Clone: 240953C9), and PE-Conjugated Goat Anti-Rabbit IgG(H+L). Cells were not fixed. This data was developed using the same antibody clone with 98557-1-PBS in a different storage buffer formulation.



1x10<sup>6</sup> human PBMCs were surface stained with 0.25 ug Anti-Human FCRL1 Rabbit RecAb (98557-1-RR, Clone: 251080E1) (red) or 0.25 ug Rabbit IgG Isotype Control RecAb (98136-1-RR, Clone: 240953C9) (blue), and PE-Conjugated Goat Anti-Rabbit IgG(H+L). Cells were not fixed. This data was developed using the same antibody clone with 98557-1-PBS in a different storage buffer formulation.



Bi-layer interferometry (BLI) kinetic assays of 98557-1-RR against Human FCRL1 were performed. The affinity constant is 0.256 nM.