

For Research Use Only

Anti-Human FCRL1 Rabbit Recombinant Antibody

Catalog Number: 98557-1-RR



Basic Information

Catalog Number:

98557-1-RR

Size:

100ug, 1000 µg/ml

Source:

Rabbit

Isotype:

IgG

Immunogen Catalog Number:

EG3713

GenBank Accession Number:

BC033690

GeneID (NCBI):

115350

UNIPROT ID:

Q96LA6

Full Name:

Fc receptor-like 1

Calculated MW:

429 aa, 47 kDa

Purification Method:

Protein A purification

CloneNo.:

251080E1

Recommended Dilutions:

FC: 0.25 µg per 10⁶ cells in a 100 µl suspension

Applications

Tested Applications:

FC

Species Specificity:

human

Positive Controls:

FC : human PBMCs, Transfected CHO cells

Background Information

Fc receptor-like protein 1 (FCRL1) is a type I transmembrane glycoprotein that plays a crucial role in regulating B-cell receptor (BCR)-mediated signaling responses (PMID:15479727). It contains intracellular tyrosine-based motifs that can modulate BCR signaling, leading to changes in calcium flux, proliferation, and antibody production (PMID: 37822931). FCRL1 is involved in regulating B-cell development and activation, with its signaling pathways influencing ERK activation through interactions with proteins such as GRB2. This regulation is essential for maintaining B-cell homeostasis and preventing the development of autoreactive B cells (PMID: 34697226).

Storage

Storage:

Store at 2 - 8°C. Stable for one year after shipment.

Storage Buffer:

PBS with 0.09% sodium azide, pH7.3

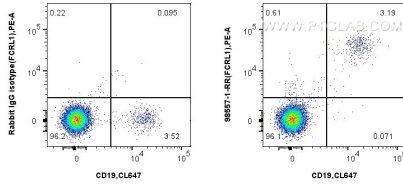
For technical support and original validation data for this product please contact:

T: 1 (888) 4PTGLAB (1-888-478-4522) (toll free in USA), or 1(312) 455-8498 (outside USA)

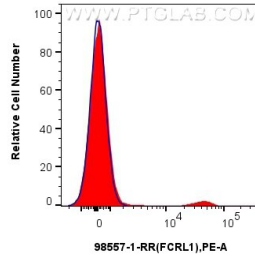
E: proteintech@ptglab.com
W: ptglab.com

This product is exclusively available under Proteintech Group brand and is not available to purchase from any other manufacturer.

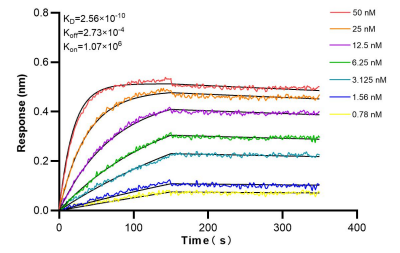
Selected Validation Data



1x10⁶ human PBMCs were surface stained with 0.25 ug Anti-Human FCRL1 Rabbit RecAb (98557-1-RR, Clone: 251080E1) or 0.25 ug Rabbit IgG Isotype Control RecAb (98136-1-RR, Clone: 240953C9), and PE-Conjugated Goat Anti-Rabbit IgG(H+L). Cells were not fixed.



1x10⁶ human PBMCs were surface stained with 0.25 ug Anti-Human FCRL1 Rabbit RecAb (98557-1-RR, Clone: 251080E1) (red) or 0.25 ug Rabbit IgG Isotype Control RecAb (98136-1-RR, Clone: 240953C9) (blue), and PE-Conjugated Goat Anti-Rabbit IgG(H+L). Cells were not fixed.



Bi-layer interferometry (BLI) kinetic assays of 98557-1-RR against Human FCRL1 were performed. The affinity constant is 0.256 nM.