

For Research Use Only

Anti-Human CD147 Rabbit Recombinant Antibody, PBS Only

Catalog Number: 98558-1-PBS



Basic Information

Catalog Number: 98558-1-PBS	GenBank Accession Number: BC009040	Purification Method: Protein A purification
Size: 1mg, 3 mg/ml	GeneID (NCBI): 682	CloneNo.: 251215H5
Source: Rabbit	UNIPROT ID: P35613	
Isotype: IgG	Full Name: basigin (Ok blood group)	
Immunogen Catalog Number: EG0436	Calculated MW: 385 aa, 42 kDa	

Applications

Tested Applications:
FC

Species Specificity:
human

Background Information

CD147, also known as Basigin or extracellular matrix metalloproteinase inducer (EMMPRIN), is a transmembrane glycoprotein that belongs to the immunoglobulin superfamily (PMID: 7812975). The molecule is composed of an intracellular portion, an extracellular portion and a single transmembrane region. CD147 is expressed on a variety of cell types (e.g., hematopoietic, epithelial, and endothelial cells) and at varying levels (PMID: 32968061). CD147 is a pleiotropic molecule that plays an important role in fetal, neuronal, lymphocyte and extracellular matrix development (PMID: 17945211).

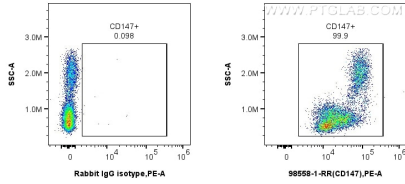
Storage

Storage:
Store at -80°C.
Storage Buffer:
PBS only, pH7.3

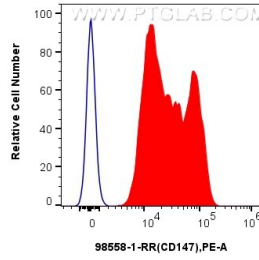
For technical support and original validation data for this product please contact:
T: 1 (888) 4PTGLAB (1-888-478-4522) (toll free in USA), or 1(312) 455-8498 (outside USA) E: proteintech@ptglab.com
W: ptglab.com

This product is exclusively available under Proteintech Group brand and is not available to purchase from any other manufacturer.

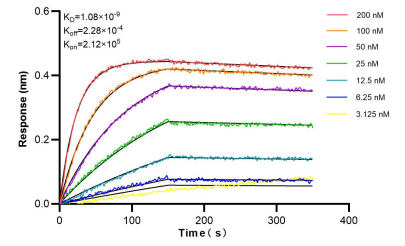
Selected Validation Data



1x10⁶ human PBMCs were surface stained with 0.25 ug Anti-Human CD147 Rabbit RecAb (98558-1-RR, Clone: 251215H5) or 0.25 ug Rabbit IgG Isotype Control RecAb (98136-1-RR, Clone: 240953C9), and PE-Conjugated Goat Anti-Rabbit IgG(H+L). Cells were incubated with FC Receptor Block prior to staining. Cells were not fixed. This data was developed using the same antibody clone with 98558-1-PBS in a different storage buffer formulation.



1x10⁶ human PBMCs were surface stained with 0.25 ug Anti-Human CD147 Rabbit RecAb (98558-1-RR, Clone:251215H5) (red) or 0.25 ug Rabbit IgG Isotype Control RecAb (98136-1-RR, Clone: 240953C9) (blue), and PE-Conjugated Goat Anti-Rabbit IgG(H+L). Cells were incubated with FC Receptor Block prior to staining. Cells were not fixed. This data was developed using the same antibody clone with 98558-1-PBS in a different storage buffer formulation.



Bi-layer interferometry (BLI) kinetic assays of 98558-1-RR against Human CD147 were performed. The affinity constant is 1.08 nM.