

For Research Use Only

# Anti-Human CD146/MCAM Rabbit Recombinant Antibody

Catalog Number: 98561-2-RR



## Basic Information

<b>Catalog Number:</b> 98561-2-RR	<b>GenBank Accession Number:</b> NM_006500.2	<b>Purification Method:</b> Protein A purification
<b>Size:</b> 100ug , 1000 µg/ml	<b>GeneID (NCBI):</b> 4162	<b>CloneNo.:</b> 250530B2
<b>Source:</b> Rabbit	<b>UNIPROT ID:</b> P43121-1	<b>Recommended Dilutions:</b> IHC: 1:500-1:2000 FC: 0.25 ug per 10 <sup>6</sup> cells in a 100 µl suspension
<b>Isotype:</b> IgG	<b>Full Name:</b> melanoma cell adhesion molecule	
<b>Immunogen Catalog Number:</b> EG2938	<b>Calculated MW:</b> 72 kDa	

## Applications

**Tested Applications:**  
IHC, FC

**Species Specificity:**  
human

**Note-IHC: suggested antigen retrieval with TE buffer pH 9.0; (\*) Alternatively, antigen retrieval may be performed with citrate buffer pH 6.0**

**Positive Controls:**

**IHC:** human tonsillitis tissue,  
**FC:** HeLa cells,

## Background Information

CD146, also known as melanoma cell adhesion molecule (MCAM) or MUC18, originally identified as a biomarker of melanoma progression, is a transmembrane glycoprotein of 113-130 kDa, belonging to the immunoglobulin (Ig) superfamily (PMID: 8378324; 25993332). Structurally, it consists of five Ig domains, a transmembrane domain, and a cytoplasmic region. In normal adult tissue, CD146 is primarily expressed by vascular endothelium and smooth muscle. CD146 is a key cell adhesion protein in vascular endothelial cell activity and angiogenesis, and has been used as marker of circulating endothelium cells (CECs) (PMID: 19356677). In addition to the membrane-anchored form of CD146, a soluble form of CD146 (sCD146, 105 kDa) has also been found in human plasma and in the supernatant of cultured human endothelial cells (PMID: 9462829; 19229070; 16374253; 14597988).

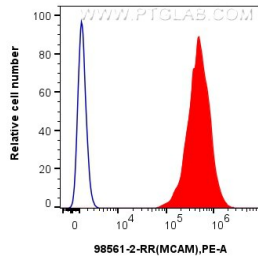
## Storage

**Storage:**  
Store at 2 - 8°C. Stable for one year after shipment.  
**Storage Buffer:**  
PBS with 0.09% sodium azide, pH7.3

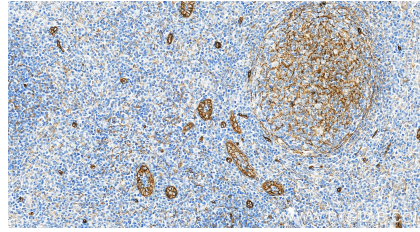
For technical support and original validation data for this product please contact:  
T: 1 (888) 4PTGLAB (1-888-478-4522) (toll free in USA), or 1(312) 455-8498 (outside USA)  
E: proteintech@ptglab.com  
W: ptglab.com

**This product is exclusively available under Proteintech Group brand and is not available to purchase from any other manufacturer.**

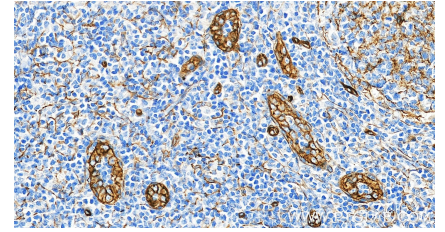
## Selected Validation Data



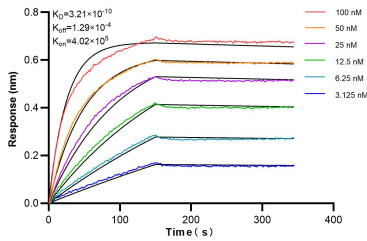
1x10<sup>6</sup> HeLa cells were surface stained with 0.25 ug Anti-Human CD146/MCAM Rabbit RecAb (98561-2-RR, Clone: 250530B2) (red) or Rabbit IgG Isotype Control RecAb (98136-1-RR, Clone: 240953C9) (blue), and PE-Conjugated Goat Anti-Rabbit IgG(H+L). Cells were not fixed.



Immunohistochemical analysis of paraffin-embedded human tonsillitis tissue slide using 98561-2-RR (CD146/MCAM antibody) at dilution of 1:1000 (under 20x lens). Heat mediated antigen retrieval with Tris-EDTA buffer (pH 9.0).



Immunohistochemical analysis of paraffin-embedded human tonsillitis tissue slide using 98561-2-RR (CD146/MCAM antibody) at dilution of 1:1000 (under 20x lens). Heat mediated antigen retrieval with Tris-EDTA buffer (pH 9.0).



Biolayer interferometry (BLI) kinetic assays of 98561-2-RR against Human CD146/MCAM were performed. The affinity constant is 0.321 nM.