

For Research Use Only

Anti-Mouse CXCL13/BCA1 Rabbit Recombinant Antibody, PBS Only

Catalog Number: 98562-1-PBS



Basic Information

Catalog Number: 98562-1-PBS	GenBank Accession Number: NM_018866	Purification Method: Protein A purification
Size: 1mg, 3 mg/ml	GeneID (NCBI): 55985	CloneNo.: 250336E12
Source: Rabbit	UNIPROT ID: O55038	
Isotype: IgG	Full Name: chemokine (C-X-C motif) ligand 13	
Immunogen Catalog Number: EG3331	Calculated MW: 12 kDa	

Applications

Tested Applications:
IHC, FC (Intra)

Species Specificity:
mouse

Background Information

CXCL13 (C-X-C motif chemokine 13), originally named B-lymphocyte chemoattractant (BLC) or B cell-attracting chemokine 1 (BCA-1), is a homeostatic chemokine that is constitutively secreted by stromal cells in the B-cell follicles of secondary lymphoid tissues (e.g., spleen, lymph nodes, tonsils, and Peyer's patches). It plays a crucial role in orchestrating cell migration within distinct regions of secondary lymphoid organs, strongly attracting B lymphocytes (and, to a lesser extent, T cells and macrophages) via its receptor CXCR5 (originally named Burkitt's lymphoma receptor 1, BLR1). In addition to maintaining immune cell trafficking and lymphoid follicle development, CXCL13 is implicated in inflammatory and autoimmune diseases (e.g., systemic lupus erythematosus, rheumatoid arthritis) and tumor progression (e.g., multiple myeloma).

Storage

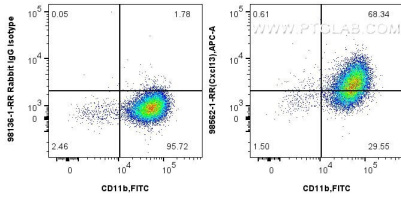
Storage:
Store at -80°C.

Storage Buffer:
PBS only, pH7.3

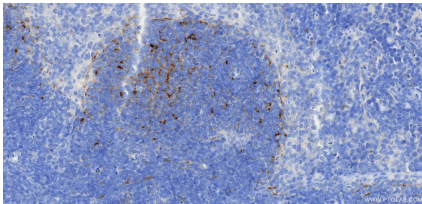
For technical support and original validation data for this product please contact:
T: 1 (888) 4PTGLAB (1-888-478-4522) (toll free in USA), or 1(312) 455-8498 (outside USA) E: proteintech@ptglab.com
W: ptglab.com

This product is exclusively available under Proteintech Group brand and is not available to purchase from any other manufacturer.

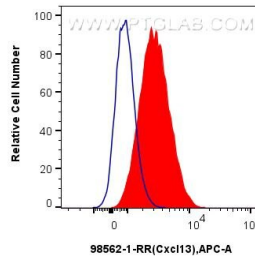
Selected Validation Data



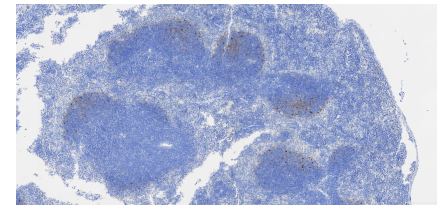
1x10⁶ mouse peritoneal macrophages were intracellularly stained with 0.25 ug Anti-Mouse CXCL13/BCA1 Rabbit RecAb (98562-1-RR, Clone: 250336E12) or 0.25 ug Rabbit IgG Isotype Control Recombinant Antibody (98136-1-RR, Clone: 240953C9), and CoraLite647-conjugated F(ab')₂ Fragment Donkey Anti-Rabbit IgG (H+L) (SA00014-7). Cells were then stained with FITC Plus Anti-Mouse CD11b. Cells were incubated with FC Receptor Block prior to staining. Cells were



Immunohistochemical analysis of paraffin-embedded mouse spleen tissue slide using 98562-1-RR (Cxcl13 antibody) at dilution of 1:1000 (under 40x lens). Heat mediated antigen retrieval with Tris-EDTA buffer (pH 9.0). This data was developed using the same antibody clone with 98562-1-PBS in a different storage buffer formulation.



1x10⁶ mouse peritoneal macrophages were intracellularly stained with 0.25 ug Anti-Mouse CXCL13/BCA1 Rabbit RecAb (98562-1-RR, Clone: 250336E12) (red) or 0.25 ug Rabbit IgG Isotype Control Recombinant Antibody (98136-1-RR, Clone: 240953C9) (blue), and CoraLite647-conjugated F(ab')₂ Fragment Donkey Anti-Rabbit IgG (H+L) (SA00014-7). Cells were incubated with FC Receptor Block prior to staining. Cells were fixed and permeabilized with Intracellular Flow



Immunohistochemical analysis of paraffin-embedded mouse spleen tissue slide using 98562-1-RR (Cxcl13 antibody) at dilution of 1:1000 (under 10x lens). Heat mediated antigen retrieval with Tris-EDTA buffer (pH 9.0). This data was developed using the same antibody clone with 98562-1-PBS in a different storage buffer formulation.