

For Research Use Only

Anti-Mouse LY75/DEC-205 Rabbit Recombinant Antibody, PBS Only

Catalog Number: 98583-3-PBS



Basic Information

Catalog Number:

98583-3-PBS

Size:

1mg, 3 mg/ml

Source:

Rabbit

Isotype:

IgG

Immunogen Catalog Number:

EG2649

GenBank Accession Number:

NM_013825.3

GeneID (NCBI):

17076

UNIPROT ID:

Q60767

Full Name:

Lymphocyte antigen 75

Calculated MW:

197 kDa

Purification Method:

Protein A purification

CloneNo.:

251337B3

Applications

Tested Applications:

FC

Species Specificity:

mouse

Background Information

LY75, also known as DEC-205 or CD205, is a type I transmembrane protein belonging to the C-type lectin receptor family. It is primarily expressed on dendritic cells (DCs) and thymic epithelium, but is also found on monocytes, T and B lymphocytes, and various other tissues, including intestinal and pulmonary epithelia.

Storage

Storage:

Store at -80°C.

Storage Buffer:

PBS only, pH7.3

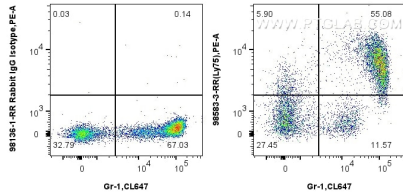
For technical support and original validation data for this product please contact:

T: 1 (888) 4PTGLAB (1-888-478-4522) (toll free in USA), or 1(312) 455-8498 (outside USA)

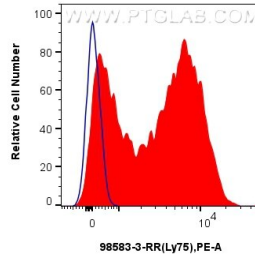
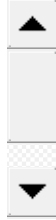
E: proteintech@ptglab.com
W: ptglab.com

This product is exclusively available under Proteintech Group brand and is not available to purchase from any other manufacturer.

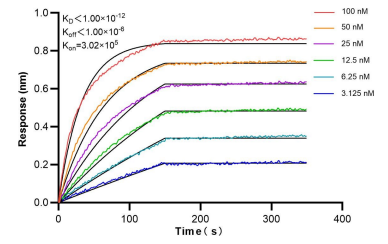
Selected Validation Data



1x10⁶ mouse bone marrow cells were surface stained with 0.25 ug Anti-Mouse LY75/DEC-205 Rabbit RecAb (98583-3-RR, Clone: 251337B3) or 0.25 ug Rabbit IgG Isotype Control RecAb (98136-1-RR, Clone: 240953C9), and PE-Conjugated Goat Anti-Rabbit IgG(H+L). Cells were then stained with CoraLite® Plus 647 Anti-Mouse Ly-6G/Ly-6C (Gr-1). Cells were incubated with FC Receptor Block prior to staining. Cells were not fixed. This data was developed



1x10⁶ mouse bone marrow cells were surface stained with 0.25 ug Anti-Mouse LY75/DEC-205 Rabbit RecAb (98583-3-RR, Clone: 251337B3) (red) or 0.25 ug Rabbit IgG Isotype Control RecAb (98136-1-RR, Clone: 240953C9) (blue), and PE-Conjugated Goat Anti-Rabbit IgG(H+L). Cells were incubated with FC Receptor Block prior to staining. Cells were not fixed. This data was developed using the same antibody clone with 98583-3-PBS in a different storage



Bi-layer interferometry (BLI) kinetic assays of 98583-3-RR against Mouse LY75/DEC-205 were performed. The affinity constant is below 1 pM.