

For Research Use Only

Anti-Human GYPC Rabbit Recombinant Antibody, PBS Only

Catalog Number: 98584-1-PBS



Basic Information

Catalog Number:

98584-1-PBS

Size:

1mg, 3 mg/ml

Source:

Rabbit

Isotype:

IgG

Immunogen Catalog Number:

EG4905

GenBank Accession Number:

BC104246

GeneID (NCBI):

2995

UNIPROT ID:

P04921

Full Name:

glycophorin C (Gerbich blood group)

Calculated MW:

14 kDa

Purification Method:

Protein A purification

CloneNo.:

251100H6

Applications

Tested Applications:

FC

Species Specificity:

human

Background Information

Glycophorin-C (GYPC) is a minor sialoglycoprotein in human erythrocyte membranes. GYPC interacts with protein 4.1R (EPB41) and plays an important role in regulating the mechanical stability of red cells. GYPC acts as the receptor for the Plasmodium falciparum erythrocyte binding ligand PfEBP-2 (baebl).

Storage

Storage:

Store at -80°C.

Storage Buffer:

PBS only, pH7.3

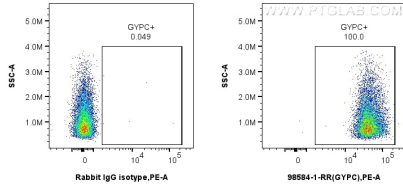
For technical support and original validation data for this product please contact:

T: 1 (888) 4PTGLAB (1-888-478-4522) (toll free in USA), or 1(312) 455-8498 (outside USA)

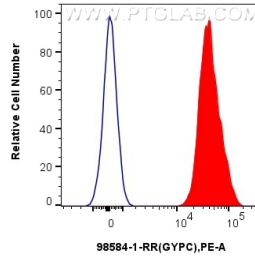
E: proteintech@ptglab.com
W: ptglab.com

This product is exclusively available under Proteintech Group brand and is not available to purchase from any other manufacturer.

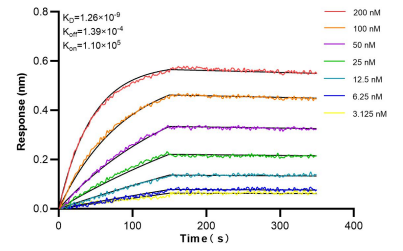
Selected Validation Data



1x10⁶ human peripheral blood erythrocytes were surface stained with 0.25 ug Anti-Human GYPC Rabbit RecAb (98584-1-RR, Clone: 251100H6) or 0.25 ug Rabbit IgG Isotype Control RecAb (98136-1-RR, Clone: 240953C9), and PE-Conjugated Goat Anti-Rabbit IgG(H+L). Cells were not fixed. This data was developed using the same antibody clone with 98584-1-PBS in a different storage buffer formulation.



1x10⁶ human peripheral blood erythrocytes were surface stained with 0.25 ug Anti-Human GYPC Rabbit RecAb (98584-1-RR, Clone: 251100H6) (red) or 0.25 ug Rabbit IgG Isotype Control RecAb (98136-1-RR, Clone: 240953C9) (blue), and PE-Conjugated Goat Anti-Rabbit IgG(H+L). Cells were not fixed. This data was developed using the same antibody clone with 98584-1-PBS in a different storage buffer formulation.



Bi-layer interferometry (BLI) kinetic assays of 98584-1-RR against Human GYPC were performed. The affinity constant is 1.26 nM.