

For Research Use Only

Anti-Mouse RON/MST1R Rabbit Recombinant Antibody, PBS Only

Catalog Number: 98587-2-PBS



Basic Information

Catalog Number:

98587-2-PBS

Size:

1mg, 3 mg/ml

Source:

Rabbit

Isotype:

IgG

Immunogen Catalog Number:

EG2647

GenBank Accession Number:

NM_009074.2

GeneID (NCBI):

19882

UNIPROT ID:

Q62190-1

Full Name:

macrophage stimulating 1 receptor (c-met-related tyrosine kinase)

Calculated MW:

151 kDa

Purification Method:

Protein A purification

CloneNo.:

250364F1

Applications

Tested Applications:

FC

Species Specificity:

mouse

Background Information

RON (also referred to as MST1R, or CD136) is a receptor tyrosine kinase that belongs to the MET proto-oncogene family. The precursor RON is produced as a glycosylated, single chain that is cleaved into a 185-kDa heterodimer of α (35 kDa) and β (150 kDa) subunits connected by a disulfide bond (PMID: 8062829). It is activated upon binding to its ligand, macrophage-stimulating protein (MSP, also known as MST1 and HGFL). RON signalling is essential for embryonic development and regulates many physiological processes including cell survival, migration and differentiation.

Storage

Storage:

Store at -80°C .

Storage Buffer:

PBS only, pH7.3

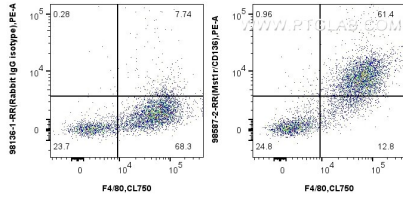
For technical support and original validation data for this product please contact:

T: 1 (888) 4PTGLAB (1-888-478-4522) (toll free in USA), or 1(312) 455-8498 (outside USA)

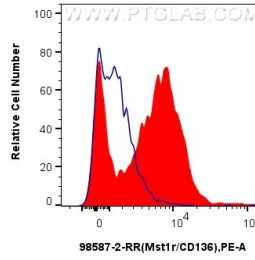
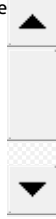
E: proteintech@ptglab.com
W: ptglab.com

This product is exclusively available under Proteintech Group brand and is not available to purchase from any other manufacturer.

Selected Validation Data



1x10⁶ mouse peritoneal macrophages were surface stained with 0.25 ug Anti-Mouse RON/MST1R Rabbit RecAb (98587-2-RR, Clone: 250364F1) or Rabbit IgG Isotype Control RecAb (98136-1-RR, Clone: 240953C9), and PE-conjugated Goat Anti-Rabbit IgG. Cells were co-stained with CoraLite® Plus 750 Anti-Mouse F4/80. Cells were incubated with FC Receptor Block prior to staining. Cells were not fixed. This data was developed using the same antibody



1x10⁶ mouse peritoneal macrophages were surface stained with 0.25 ug Anti-Mouse RON/MST1R Rabbit RecAb (98587-2-RR, Clone: 250364F1) (red) or Rabbit IgG Isotype Control RecAb (98136-1-RR, Clone: 240953C9) (blue), and PE-conjugated Goat Anti-Rabbit IgG. Cells were incubated with FC Receptor Block prior to staining. Cells were not fixed. This data was developed using the same antibody clone with 98587-2-PBS in a different storage buffer formulation.

