

For Research Use Only

# Anti-Human ATP1B3 Rabbit Recombinant Antibody, PBS Only

Catalog Number: 98589-1-PBS



## Basic Information

Catalog Number:

98589-1-PBS

Size:

1mg, 3 mg/ml

Source:

Rabbit

Isotype:

IgG

Immunogen Catalog Number:

EG4947

GenBank Accession Number:

BC011835

GeneID (NCBI):

483

UNIPROT ID:

P54709

Full Name:

ATPase, Na<sup>+</sup>/K<sup>+</sup> transporting, beta 3 polypeptide

Calculated MW:

32 kDa

Purification Method:

Protein A purification

CloneNo.:

251377D4

## Applications

Tested Applications:

FC

Species Specificity:

human

## Background Information

ATP1B3 (also known as CD298) is the  $\beta$ 3 subunit of Na<sup>+</sup>/K<sup>+</sup>-ATPase which functions to maintain sodium and potassium gradients across membranes involved in cellular activities. ATP1B3 is a glycosylated protein and there are fully and intermediately glycosylated forms of ATP1B3 in mammalian cells. The predicted MW of ATP1B3 is around 32 kDa, while various forms (38-43 kDa) can be observed due to the different level of glycosylation (PMID: 30792309, 16339171, 17176442).

## Storage

Storage:

Store at -80°C.

Storage Buffer:

PBS only, pH7.3

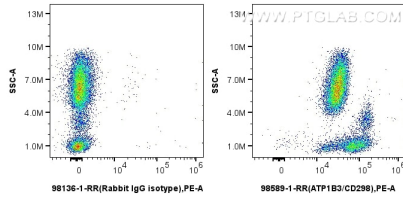
For technical support and original validation data for this product please contact:

T: 1 (888) 4PTGLAB (1-888-478-4522) (toll free  
in USA), or 1(312) 455-8498 (outside USA)

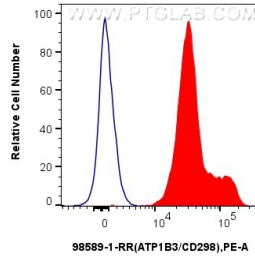
E: [proteintech@ptglab.com](mailto:proteintech@ptglab.com)  
W: [ptglab.com](http://ptglab.com)

This product is exclusively available under Proteintech Group brand and is not available to purchase from any other manufacturer.

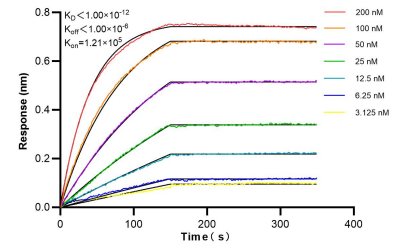
## Selected Validation Data



1x10<sup>6</sup> human peripheral blood leukocytes were surface stained with 0.25 ug Anti-Human ATP1B3 Rabbit RecAb (98589-1-RR, Clone:251377D4) or Rabbit IgG Isotype Control RecAb (98136-1-RR, Clone: 240953C9) and PE-Conjugated Goat Anti-Rabbit IgG(H+L). Cells were incubated with FC Receptor Block prior to staining. Cells were not fixed. This data was developed using the same antibody clone with 98589-1-PBS in a different storage buffer formulation.



1x10<sup>6</sup> human peripheral blood leukocytes were surface stained with 0.25 ug Anti-Human ATP1B3 Rabbit RecAb (98589-1-RR, Clone:251377D4)(red) or Rabbit IgG Isotype Control RecAb (98136-1-RR, Clone: 240953C9)(blue) and PE-Conjugated Goat Anti-Rabbit IgG(H+L). Cells were incubated with FC Receptor Block prior to staining. Cells were not fixed. This data was developed using the same antibody clone with 98589-1-PBS in a different storage



Bi-layer interferometry (BLI) kinetic assays of 98589-1-RR against Human ATP1B3 were performed. The affinity constant is below 1 pM.

