

For Research Use Only

Anti-Human ATP1B3 Rabbit Recombinant Antibody

Catalog Number: 98589-1-RR



Basic Information

Catalog Number:

98589-1-RR

Size:

100ug, 1000 µg/ml

Source:

Rabbit

Isotype:

IgG

Immunogen Catalog Number:

EG4947

GenBank Accession Number:

BC011835

GeneID (NCBI):

483

UNIPROT ID:

P54709

Full Name:

ATPase, Na⁺/K⁺ transporting, beta 3 polypeptide

Calculated MW:

32 kDa

Purification Method:

Protein A purification

CloneNo.:

251377D4

Recommended Dilutions:

FC: 0.25 ug per 10⁶ cells in a 100 µl suspension

Applications

Tested Applications:

FC

Species Specificity:

human

Positive Controls:

FC : FC receptor blocked human peripheral blood leukocytes,

Background Information

ATP1B3 (also known as CD298) is the β3 subunit of Na⁺/K⁺-ATPase which functions to maintain sodium and potassium gradients across membranes involved in cellular activities. ATP1B3 is a glycosylated protein and there are fully and intermediately glycosylated forms of ATP1B3 in mammalian cells. The predicted MW of ATP1B3 is around 32 kDa, while various forms (38-43 kDa) can be observed due to the different level of glycosylation (PMID: 30792309, 16339171, 17176442).

Storage

Storage:

Store at 2 - 8°C. Stable for one year after shipment.

Storage Buffer:

PBS with 0.09% sodium azide, pH7.3

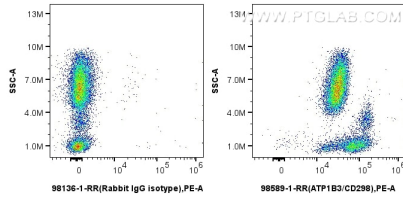
For technical support and original validation data for this product please contact:

T: 1 (888) 4PTGLAB (1-888-478-4522) (toll free in USA), or 1(312) 455-8498 (outside USA)

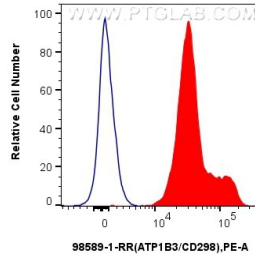
E: proteintech@ptglab.com
W: ptglab.com

This product is exclusively available under Proteintech Group brand and is not available to purchase from any other manufacturer.

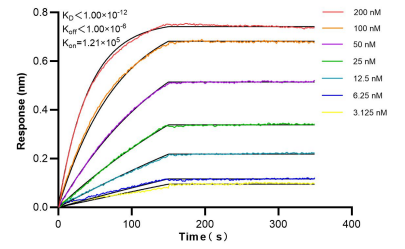
Selected Validation Data



1x10⁶ human peripheral blood leukocytes were surface stained with 0.25 ug Anti-Human ATP1B3 Rabbit RecAb (98589-1-RR, Clone:251377D4) or Rabbit IgG Isotype Control RecAb (98136-1-RR, Clone: 240953C9) and PE-Conjugated Goat Anti-Rabbit IgG(H+L). Cells were incubated with FC Receptor Block prior to staining. Cells were not fixed.



1x10⁶ human peripheral blood leukocytes were surface stained with 0.25 ug Anti-Human ATP1B3 Rabbit RecAb (98589-1-RR, Clone:251377D4)(red) or Rabbit IgG Isotype Control RecAb (98136-1-RR, Clone: 240953C9)(blue) and PE-Conjugated Goat Anti-Rabbit IgG(H+L). Cells were incubated with FC Receptor Block prior to staining. Cells were not fixed.



Biolayer interferometry (BLI) kinetic assays of 98589-1-RR against Human ATP1B3 were performed. The affinity constant is below 1 pM.