

For Research Use Only

Anti-Mouse IGSF2/CD101 Rabbit Recombinant Antibody, PBS Only

Catalog Number: 98596-2-PBS



Basic Information

Catalog Number: 98596-2-PBS	GenBank Accession Number: NM_001167906.1	Purification Method: Protein A purification
Size: 1mg, 3 mg/ml	GeneID (NCBI): 630146	CloneNo.: 250569E6
Source: Rabbit	UNIPROT ID: A8E0Y8	
Isotype: IgG	Full Name: immunoglobulin superfamily, member 2	
Immunogen Catalog Number: EG1832	Calculated MW: 114kDa	

Applications

Tested Applications:
FC

Species Specificity:
mouse

Background Information

IGSF2, also known as CD101, is a low abundance protein. Expression of CD101 is found on monocytes, granulocytes and dendritic cells. In addition expression on T lymphocytes is important for cell activation. It plays a role as inhibitor of T-cells proliferation induced by CD3 and inhibits expression of IL2RA on activated T-cells and secretion of IL2.

Storage

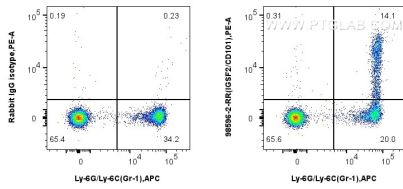
Storage:
Store at -80°C.

Storage Buffer:
PBS only, pH7.3

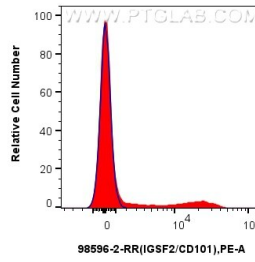
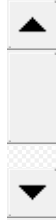
For technical support and original validation data for this product please contact:
T: 1 (888) 4PTGLAB (1-888-478-4522) (toll free in USA), or 1(312) 455-8498 (outside USA) E: proteintech@ptglab.com
W: ptglab.com

This product is exclusively available under Proteintech Group brand and is not available to purchase from any other manufacturer.

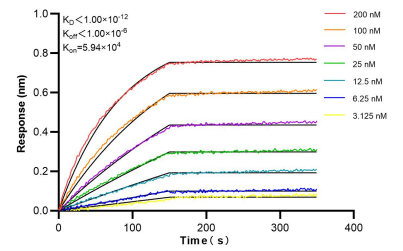
Selected Validation Data



1x10⁶ mouse bone marrow cells were surface stained with 0.25 ug Anti-Mouse IGSF2/CD101 Rabbit RecAb (98596-2-RR, Clone: 250569E6) or 0.25 ug Rabbit IgG Isotype Control RecAb (98136-1-RR, Clone: 240953C9), and PE-Conjugated Goat Anti-Rabbit IgG(H+L). Cells were then stained with APC Anti-Mouse Ly-6G/Ly-6C (Gr-1) (RB6-8C5) (APC-65140, Clone: RB6-8C5). Cells were not fixed. This data was developed using the same antibody clone



1x10⁶ mouse bone marrow cells were surface stained with 0.25 ug Anti-Mouse IGSF2/CD101 Rabbit RecAb (98596-2-RR, Clone: 250569E6) (red) or 0.25 ug Rabbit IgG Isotype Control RecAb (98136-1-RR, Clone: 240953C9) (blue), and PE-Conjugated Goat Anti-Rabbit IgG(H+L). Cells were not fixed. This data was developed using the same antibody clone with 98596-2-PBS in a different storage buffer formulation.



Bi-layer interferometry (BLI) kinetic assays of 98596-2-RR against Mouse IGSF2/CD101 were performed. The affinity constant is below 1 pM.