

For Research Use Only

Anti-Mouse IGSF2/CD101 Rabbit Recombinant Antibody

Catalog Number: 98596-2-RR



Basic Information

Catalog Number:

98596-2-RR

Size:

100ug , 1000 µg/ml

Source:

Rabbit

Isotype:

IgG

Immunogen Catalog Number:

EG1832

GenBank Accession Number:

NM_001167906.1

GeneID (NCBI):

630146

UNIPROT ID:

A8E0Y8

Full Name:

immunoglobulin superfamily,
member 2

Calculated MW:

114kDa

Purification Method:

Protein A purification

CloneNo.:

250569E6

Recommended Dilutions:

FC: 0.25 ug per 10⁶ cells in a 100 µl
suspension

Applications

Tested Applications:

FC

Species Specificity:

mouse

Positive Controls:

FC : mouse bone marrow cells,

Background Information

IGSF2, also known as CD101, is a low abundance protein. Expression of CD101 is found on monocytes, granulocytes and dendritic cells. In addition expression on T lymphocytes is important for cell activation. It plays a role as inhibitor of T-cells proliferation induced by CD3 and inhibits expression of IL2RA on activated T-cells and secretion of IL2.

Storage

Storage:

Store at 2 - 8°C. Stable for one year after shipment.

Storage Buffer:

PBS with 0.09% sodium azide, pH7.3

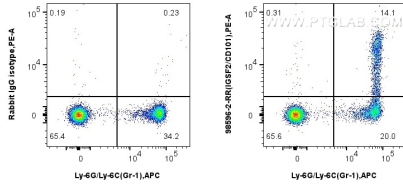
For technical support and original validation data for this product please contact:

T: 1 (888) 4PTGLAB (1-888-478-4522) (toll free
in USA), or 1(312) 455-8498 (outside USA)

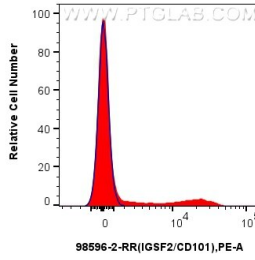
E: proteintech@ptglab.com
W: ptglab.com

This product is exclusively available under Proteintech Group brand and is not available to purchase from any other manufacturer.

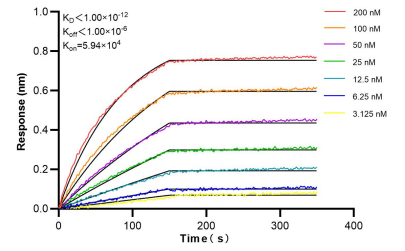
Selected Validation Data



1x10⁶ mouse bone marrow cells were surface stained with 0.25 ug Anti-Mouse IGSF2/CD101 Rabbit RecAb (98596-2-RR, Clone: 250569E6) or 0.25 ug Rabbit IgG Isotype Control RecAb (98136-1-RR, Clone: 240953C9), and PE-Conjugated Goat Anti-Rabbit IgG(H+L). Cells were then stained with APC Anti-Mouse Ly-6G/Ly-6C (Gr-1) (RB6-8C5) (APC-65140, Clone: RB6-8C5). Cells were not fixed.



1x10⁶ mouse bone marrow cells were surface stained with 0.25 ug Anti-Mouse IGSF2/CD101 Rabbit RecAb (98596-2-RR, Clone: 250569E6) (red) or 0.25 ug Rabbit IgG Isotype Control RecAb (98136-1-RR, Clone: 240953C9) (blue), and PE-Conjugated Goat Anti-Rabbit IgG(H+L). Cells were not fixed.



Biolayer interferometry (BLI) kinetic assays of 98596-2-RR against Mouse IGSF2/CD101 were performed. The affinity constant is below 1 pM.